

COLLECTION



kuhlmann 
Meine Küche. Made in Germany.



Die RWK & Kuhlmann Küchen GmbH steht für hohe Individualität mit beinahe uneingeschränkten Möglichkeiten. Seit 1923 produzieren wir in Ostwestfalen Küchen, die in ihrer Vielfältigkeit ihresgleichen sucht.

Ganz gleich, wie Ihr Küchenraum geschnitten ist, was für individuelle Details Sie umgesetzt oder welche Träume Sie verwirklicht haben möchten - mit unseren Küchenmöbeln können Sie jeden Zentimeter bis in den kleinsten Winkel optimal nutzen, denn wir fertigen die Schränke individuell nach Maß und exakt nach dem zur Verfügung stehenden Raum. Sonderanfertigungen sind bei uns in Höhe, Breite als auch in Tiefe fast uneingeschränkt umsetzbar.

Wo andere aufhören fangen wir an.

Den Gedanken nach dem perfekten Möbel tragen all unsere Mitarbeiter in sich und geben jeden Tag aufs Neue 100% für ihre ganz individuell gestaltete Wunschküche.

Ihre Wünsche sind unser Antrieb.

Lassen Sie sich inspirieren und fangen Sie an, zu träumen.
Gemeinsam mit Ihnen schaffen wir Küchen(t)räume fürs Leben.

RWK & Kuhlmann Küchen GmbH

Inhalt

Content | Inhoud | Contenu



FREE & VADA 4-7



MODA & VIDA 9-11



VADA & ICON 12-13



ICON 14



PURE 15



ICON & TEMA uni 16-17



MULTILEVEL 18-19



PORT F & PURE 21-23



TA'OR 24-25



VADA 26-27



FREE & SMAT 27-31



LINE & FREE 32-33



MILA & FREE 34-35



ICON & VADA 36-39



VADA & ICON 40-43



SMAT & MILA 44



SOLE 45



KING 46-47



VIDA & FREE 48-49



RINO & FREE 50-51



VADA & RINO 52-53



FREE 54-55



PORT C 57



COMO 58-59



PORT D 60-61



PORT 62-65



Specials 66-67



Technik & Design 68-75



Collection 76-94



APL & Griffe 95-97



Nachhaltigkeit 98-99



kuhlmann 
Meine Küche. Made in Germany.

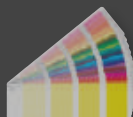


FREE
20051

Sherman Eiche anthrazit | Anthracite Sherman Oak
Eiken Sherman antraciet | Chêne Sherman anthracite

VADA
400033

Oliv | Olive
Olijf | Olive



THEWALL®
by AKP





THEWALL®
by AKP

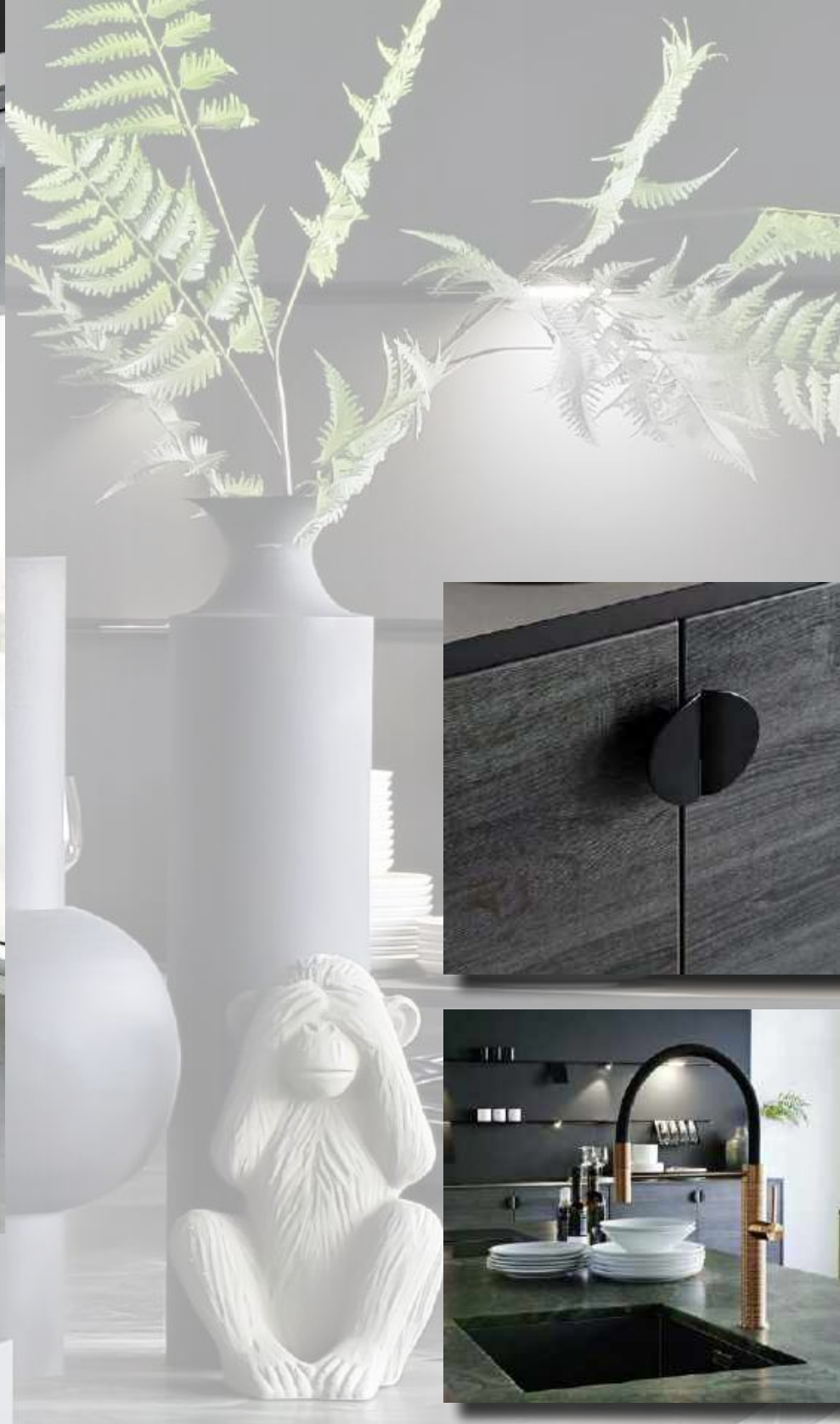
Besonderheiten | Specials | Specials | Specials

- 2 Inseln verbunden mit Ansatz Tisch 80 mm.
- Unterbauspüle.
- Sockel aus Frontmaterial.
- Nischenrückwandverkleidung „THE WALL“.

- 2 islands connected with floating table 80 mm.
- Undermount sink.
- Front material plinth.
- Niche rear wall cladding „THE WALL“.

- 2 eilanden verbonden met zwevende tafel 80 mm.
- Onderbouw spoelbak.
- Plint van frontmateriaal.
- Nis achterwand bekleding „THE WALL“.

- 2 îles reliées par une table flottante 80 mm.
- Évier encastré.
- Socle en matériau de façade.
- Revêtement arrière de niche „THE WALL“.





Nach Hause kommen und wohlfühlen.







MODA
635200

Natur | Natural
Natuur | Naturel

MILA
10171

Angoragrau | Angora grey
Angora grijs | Gris angora



Kleine Küche ganz groß.

Premiumweiße Mattlackküche akzentuiert mit Artisan Eiche NB und Fronten in Beton hellgrau NB.

Small kitchen, pretty big.

Premium white matt lacquered kitchen accentuated with Artisan oak imitation and fronts in concrete light grey.

Kleine Keuken best groot.

Premium wit mat gelakte keuken geaccentueerd met Artisan eiken imitatie en fronten in beton lichtgrijs.

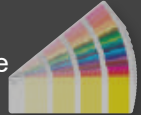
Petite cuisine assez grand.

Cuisine haut de gamme laqué blanc primaire mat rehaussée de pierre imitation Chêne artisan et façades imitation béton gris clair.



VADA
400011

Premiumweiß | Premium white
Premiumwit | Blanc primaire



ICON
24010

Ares Beton hellgrau | Ares Beton light grey
Ares Beton lichtgrijs | Ares Beton gris clair

CLEAF



Besonderheiten | Specials | Specials | Specials

- Hängeschränke mit Faltilftüren.
- Eckschrank mit Le Mans Schwenktafeln.
- Aufgesetzte Arbeitsplatte als schwebende Tresenplatte.
- Wall units with folding lift-up door.
- Corner unit with Le Mans swivelling shelves.
- Additional worktop as a „floating“ table.
- Bovenkasten met vouwliftdeuren.
- Hoekkast met draaibare Le Mans plateaus.
- Opgebouwd werkblad als „zwevende“ tafel.
- Meubles hauts avec portes pliantes relevable.
- Meuble d'angle avec tablettes pivotantes LeMans.
- Plan de travail attaché comme table supérieure „flottante“.



ICON 24013 Cheope Total White | **ICON 24021** Millenium Total White
ICON 24023 Millenium Nero | **ICON 24022** Millenium Nero



CLEAF

Besonderheiten | Specials | Specials | Specials

- Dreidimensionale Fronten.
- Bis 240 cm breite, durchgehende Fronten als Faltilifttür.
- „Schwebende“ Insel durch Kufendesign.

- Three-dimensional fronts.
- Up to 240 cm wide, continuous fronts as a folding lift door.
- „Floating“ island by skid design.

- Driedimensionale fronten.
- Tot 240 cm brede, doorlopende fronten als vouwliftdeur.
- „Zwevend“ eiland door skid-ontwerp.

- Façades tridimensionnelles.
- Jusqu'à 240 cm de largeur, façades continues comme porte relevable pliante.
- Îlot „flottant“ par skid design.



Wohnliche Apartmentküche

Stilvolle Apartmentküche, die auf kleinem Raum vieles bietet. Hier finden Spüle, Kühlschrank, Backofen und natürlich ein Geschirrspüler ihren Platz.

Comfortable apartment kitchen

Stylish apartment kitchen that offers a lot in a small space. There is space for the sink, fridge, oven and of course a dishwasher.

Behaaglijke appartement keuken

Stijlvolle appartement keuken die veel biedt in een kleine ruimte. Er is ruimte voor de spoelbak, koelkast, oven en natuurlijk een vaatwasser.

Cuisine d'appartement confortable

Cuisine d'appartement élégante qui offre beaucoup dans un petit espace. Il y a de la place pour l'évier, le réfrigérateur, le four et bien sûr un lave-vaisselle.



PURE
31072

Schwarz supermatt | Black supermatt
Zwart super mat | Noir extra mat





Besonderheiten | Specials | Specials | Specials

- Dreidimensionale Fronten.
- Griffloser Multilevel.

- Three-dimensional fronts.
- Handleless Multilevel.

- Driedimensionale fronten.
- Greeploze Multilevel.

- Façades tridimensionnelles.
- Multilevel sans poignées.



ICON
24024/24025

Millenium Watson | Millenium Watson
Millenium Watson | Millenium Watson

MILA
10191

Platingrau | Platinum grey
Platinumgrijs | Gris platine





Multilevel - Einfach vielseitig!
Unser prämiertes Highlight seit 2014

Multilevel - simply versatile!
Our awarded-winning highlight since 2014

Multilevel - gewoon veelzijdig!
Ons unieke highlight sinds 2014

Multilevel - tout simplement polyvalent !
Notre point culminant primé depuis 2014

Multilevel. Ein ganz besonderer Schrank!

Bedienbar von 2 oder 3 Seiten, je nach Wunsch und Küchenplanung.

Multilevel. A very special unit!

Can be opened from 2 or 3 sides, according to your wishes and kitchen planning.

Multilevel. Een heel bijzondere kast!

Aan 2 of 3 zijden te bedienen, afhankelijk van uw wensen en keukenplanning.

Multilevel. Un dressing très spécial !

Peut être commandé de 2 ou 3 côtés, selon vos souhaits et la planification de la cuisine.





Puristisch, klar, gradlinig.





Cucina italiana – Raffinierte Details

Puristische Küche mit italienischem Flair.

Cucina italiana – refined details.

Purist kitchen with Italian flair.

Cucina italiana – verfijnde details.

Puristische keuken met Italiaanse flair.

Cucina italiana – détails raffinés.

Cuisine puriste aux accents italiens.

Besonderheiten | Specials | Specials | Specials

- Grifflosvariante Giro. Die geschwungene Front.
- Moderne Ladhaus-Optik.
- 12 mm schmale Wangen für eine dezente Optik.
- Bodentiefe, Sockelüberdeckende Fronten.

- Handleless variant Giro. The curved front.
- Modern country-style look.
- 12 mm modular panels for a subtle look.
- Extended fronts to the floor, covering plinth.

- Greeploze variant Giro. De gebogen front.
- Moderne landelijke uitstraling.
- 12 mm smalle wangen voor een subtiële look.
- Verlengde fronten tot kort boven de vloer, plint bedekkend.

- Variante sans poignée Giro. La façade incurvée.
- Aspect maison de campagne moderne.
- Joes étroites de 12 mm pour un look subtil.
- Façades jucqu'au sol, recouvrant le socle.



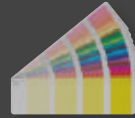
**PURE
31002**

Premiumweiß supermatt | Premium white super matt
Premiumwit supermat | Blanc primaire extra mat



**PORT F
422031**

Platingrau | Platinum grey
Platinumgrijs | Gris platine



Mix it

**Griffvarianten
Handle variants
Greep varianten
Variantes de poignée**





Zeitloses Design, endlose Vielfalt und dynamische Präzision sind die Komponenten der TA'OR - Qualität. Lassen Sie sich begeistern & entscheiden Sie sich für ihr Unikat!

Timeless design, endless variety and dynamic precision are the components of TA'OR quality. Let yourself be inspired & decide for your unique piece!

Tijdloos design, eindeloze variatie en dynamische precisie zijn de componenten van TA'OR kwaliteit. Laat je inspireren & beslis voor jouw unieke keuken!

Un design intemporel, une diversité infinie et une précision dynamique sont les composants de la qualité TA'OR. Laissez-vous séduire et optez pour votre pièce unique !

Freie Wahl innen und außen: Schubkästen und Auszüge in persönlichem Design



Furnier Birke Natur



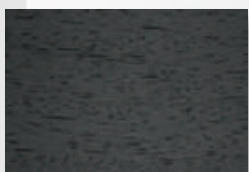
Furnier Eiche Natur



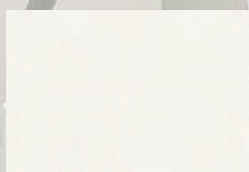
Furnier Nussbaum Natur



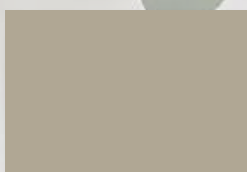
Furnier Eiche Sepia



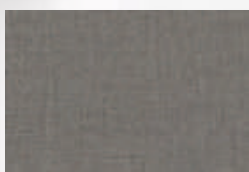
Furnier Yaya Schwarz



Premiumweiß



Dakar Grau



Leinen Anthrazit



Onyx Grau



Soft Black

10 Außendekore | 10 Innendekore = 100 Möglichkeiten

Wählen Sie aus den 100 unterschiedlichen Farbvarianten Ihren Favorit aus und machen Sie Ihre Küche zu einem unverwechselbaren Unikat.

Jedes der zehn Dekore sind als Außen- und Innendekor frei kombinierbar und können entweder im Mix oder sortenrein gewählt werden.

Für weitere Informationen, sprechen Sie bitte Ihren Kuhlmann Fachhandelspartner des Vertrauens an.





Besonderheiten | Specials | Specials | Specials

- Grifflosvariante Giro. Die geschwungene Front.
- Abgerundete Unter- und Seitenschränke (RONDO).
- Gleittüren als Aufsatzschrank.
- Übertiefe Unterschränke.
- Lamellensockel in der Insel für Muldenlüfter.

- Handleless variant Giro. The curved front.
- Rounded base- & tall units (RONDO).
- Sliding doors as a top unit.
- Overdeep base units.
- Slatted plinth at the island for hob.

- Greeploze variant Giro. De gebogen front.
- Afgeronde onder- & hoge kasten (RONDO).
- Schuifdeuren als bovenkast.
- Overdiepte onderkasten.
- Lamellen plint in het eiland voor kookplaat.

- Variante sans poignée Giro. La façade incurvée.
- Meubles basses & armoires latérales arrondies (RONDO).
- Portes coulissantes comme armoire à poser.
- Meubles bas surprofondeur.
- Socle à lamelles dans l'îlot pour la cuisson.

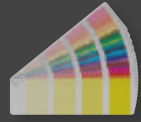


**VADA
NCS**

Grau | Grey
Grijs | Gris

**VADA
NCS**

Basaltgrau | Basalt grey
Basaltgrijs | Gris basalte





**FREE
20049**

Sherman Eiche cognacbraun | Cognac Brown Sherman oak
Eiken Sherman cognac | Chêne Sherman cognac

**FREE
20017**

Metal Fabric anthrazit | Anthracite Metal Fabric
Metal Fabric antraciet | Fabric Metal anthracite



**SMAT
490040**

Anthrazit matt | Anthracite matt
Antraciet mat | Anthracite mat

**SMAT
490010**

Premiumweiß matt | Premium white matt
Premiumwit mat | Blanc primaire mat



REHAU
RAUVISIO crystal



Aufsatzschränke mit Wingline-Faltüren | Dresser units with Wingline folding doors
Opzetkasten met Wingline-vouwdeuren | Meuble superposable avec portes pliantes „Wingline“





Besonderheiten | Specials | Specials | Specials

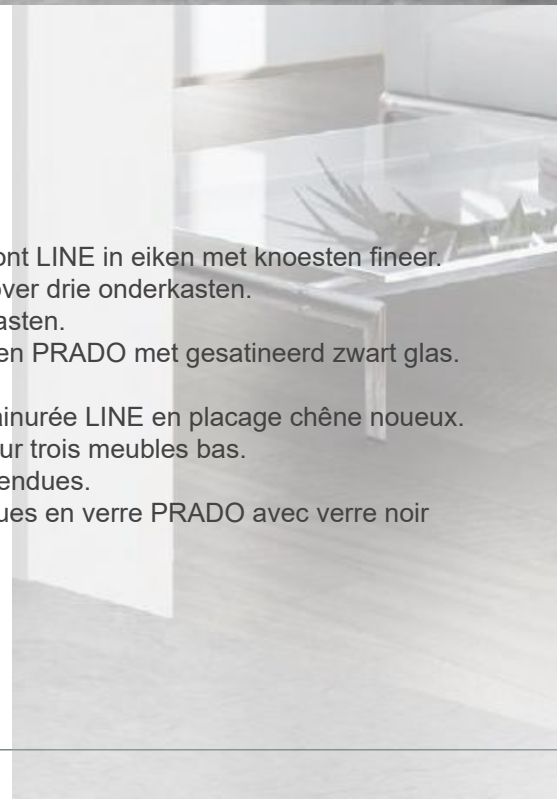
- Wingline Falttüren-Aufsatzschränke.
- Bodentiefe Frontverlängerung.
- Griffe in Frontfarbe pulverbeschichtet.
- Grifflose Fronten mit Blumotion Tip-on.
- Wingline folding door dresser unit.
- Extended fronts to the floor.
- Handles powder-coated in front colour.
- Handleless doors with Blumotion Tip-on.
- Wingline vouwdeuren-opzetkast.
- Onderaan verlengde fronten.
- Gepoedercoate grepen in frontkleur.
- Greeploze fronten met Blumotion Tip-on.
- Portes pliantes Wingline.
- Descendant jusqu'au sol de façade rallongement.
- Poignées dans couleur avant couvert de poudre.
- Façades sans poignée avec Blumotion Tip-on.



Besonderheiten | Specials | Specials | Specials

- Neue Rillenfront LINE in Asteiche furnier.
- Korpusübergreifende, durchgehende Front.
- Hängende Unterschränke.
- Glashängeschränke PRADO mit Schwarzglas satiniert.
- New grooved front LINE in knotty oak veneer.
- Continuous front over three base units.
- Hanging base units.
- Glass wall units PRADO with satin black glass.

- Nieuw gegroefd front LINE in eiken met knoesten fineer.
- Doorlopend front over drie onderkasten.
- Hangende onderkasten.
- Glazen bovenkasten PRADO met gesatineerd zwart glas.
- Nouvelle façade rainurée LINE en placage chêne noueux.
- Façade continue sur trois meubles bas.
- Meubles bas suspendues.
- Armoires suspendues en verre PRADO avec verre noir satiné.





LINE
522000

Asteiche | Knotty oak
Eiken met knoesten | Chêne nouveau

FREE
20003

Taupe dunkel | Dark taupe
Donker taupe | Gris argile foncé





Besonderheiten | Specials | Specials | Specials

- Jalousieschrank mit Glas-Lamellen.
- Multicorner im Hängeschrank.
- FREE-Griff.

- Roller shutter unit with glass slats.
- Multicorner in wall unit.
- FREE-Handle.

- Rolluikkast met glazen lamellen.
- Multicorner in de wandkast.
- FREE-Greep.

- Armoire à rideau avec lamelles en verre.
- Multicorner dans l'armoire suspendue.
- FREE-Poignée.



MILA
10171

Angoragrau | Angora grey
Angora grijs | Gris angora

FREE
20073

Pale Tamarak | Pale Tamarak
Pale Tamarak | Pale Tamarak





Besonderheiten | Specials | Specials | Specials

- Einschubfronten.
- Auszugstablär.
- Multicorner-Regal in Frontmaterial.
- Pocket doors.
- Pull-out shelf.
- Multicorner-shelf in front material.
- Pocketdeuren.
- Plateau uittrekelement.
- Multicorner-planken in frontmateriaal.
- Façades escamotables.
- Tablette coulissante.
- Multicorner-étagèrean matériau de façade.



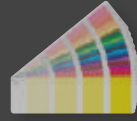
ICON
24004

Primofiore Grigio | Primofiore Grigio
Primofiore Grigio | Primofiore Grigio

CLEAF

VADA
400032

Karbongrau | Carbon grey
Carbongrijs | Gris carbone





Inselküche mit vielen Besonderheiten.

Diskret und aufgeräumt. Modernes Wohnen und Arbeiten in einem.

Island kitchen with many special features.

Discreet and tidy. Modern living and working in one.

Eilandkeuken met veel bijzonderheden.

Discreet en netjes. Modern wonen en werken in één.

Cuisine en îlot avec de nombreuses particularités.

Discret et soigné. Vivre et travailler de façon moderne en un.





Besonderheiten | Specials | Specials | Specials

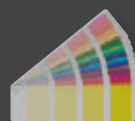
- Haptische Front ICON Primofiore Grigio.
- „schwebende“ Unterschränke.
- Multicorner mit Apotheker-Auszugstechnik als Seitenschrank.
- Haptic front ICON Primofiore Grigio.
- „Floating“ base units.
- Multicorner with pull-out system as a tall unit.

- Haptische front ICON Primofiore Grigio.
- „Zwevende“ onderkasten.
- Multicorner met „Apotheker“-uittrektechniek als hoge kast.
- Front haptique ICON Primofiore Grigio.
- Meubles bas „flottantes“.
- Multicorner avec technologie d'extraction comme armoire latérale.



VADA
400036

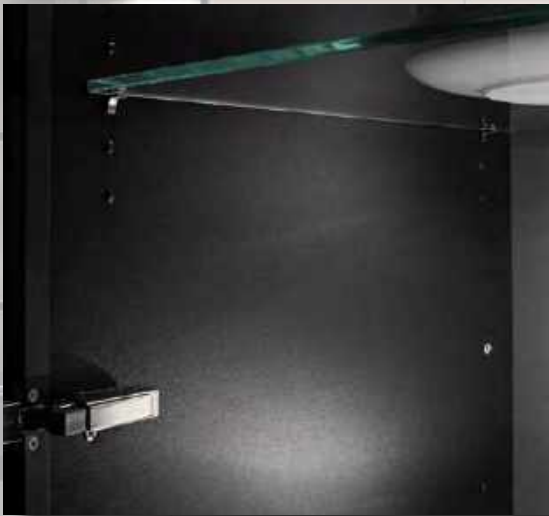
Altrosa | Antique pink
Oud roze | Vieux rose



ICON
24097

Dark Grey | Dark Grey
Dark Grey | Dark Grey





Leinenstruktur | Linen structure |
Linnen structuur | Structure de lin

Besonderheiten | Specials | Specials | Specials

- Rückwand in Leinenstruktur Anthrazit.
- Auszüge & Schubläden mit TA'OR-Ausstattung.
- 11° Unterschränke als Insel- und Zeilenabschluss.
- SQUARE-Verglasung.
- Back panel in linen structure anthracite.
- Pull-outs & drawers with TA'OR-equipment.
- 11° base units as island and end units.
- SQUARE-Glazing.

- Achterwand in linnenstructuur antraciet.
- Korfladen & bestekladen met TA'OR-binnenwerk.
- 11° onderkasten als eiland- en eindkasten.
- SQUARE-Beglazing.
- Panneau arrière en structure de lin anthracite.
- Coulissants & tiroirs avec équipement TA'OR.
- 11° meuble bas en îlot et fins de rangée.
- SQUARE-Vitrage.





SMAT
490050

Schwarz matt | Black matt
Zwart mat | Noir mat



REHAU
RAUVISIO crystal

MILA
10182

Schwarz matt | Black matt
Zwart mat | Noir mat

Besonderheiten | Specials | Specials | Specials

- Schwarze SMAT Front in Glaslaminat matt.
- Antifingerprint.
- Grifflose Kücheninsel.

- Black SMAT front in glass laminate matt.
- Antifingerprint.
- Handleless kitchen island.

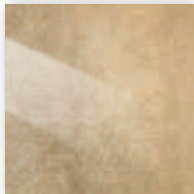
- Zwart SMAT front in glaslaminaat mat.
- Anti-vingerafdruk.
- Greeploos keukeneiland.

- SMAT-façade noire en verre laminé mat.
- Anti-empainte.
- Îlot de cuisine sans poignées.



SOLE
712010

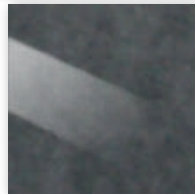
Burnished brush glänzend | Burnished brush gloss
Burnished brush glans | Burnished brush brillant



Sole 712010



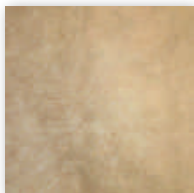
Sole 712020



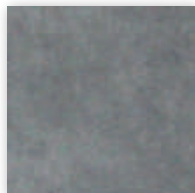
Sole 712030

SOLE

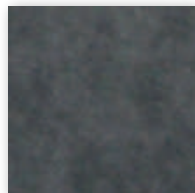
glänzend | gloss | glans | brillant



Nube 711010



Nube 711020



Nube 711030

NUBE

matt | matt | mat | mat

Besonderheiten | Specials | Specials | Specials

- Changierende Oberfläche.
- Tiefenwirkung durch PUR-Lackierung.
- Einzigartig - Jede Front ein Unikat.

- Changing surface.
- Depth effect through PUR coating.
- Each front is unique.

- Veranderend oppervlak.
- Diepte-effect door PUR-coating.
- Elk front is uniek.

- Surface changeante.
- Effet de profondeur grâce au revêtement PUR.
- Chaque façade est unique.



Besonderheiten | Specials | Specials | Specials

- Front mit Tiefenprägung synchron zum Dekorbild.
- Design-Detail: vorgezogene Elektrogeräte.
- Ergonomisch erhöhtes Spülbecken.

- Front with deep embossing as per decor.
- Design-Detail: pulled-out appliances.
- Ergonomically raised sink.

- Front met diepe structuur gelijk aan het decorbeeld.
- Desingdetail: naar voren gemonteerde apparaten.
- Ergonomisch verhoogde spoelbak.

- Façade avec gaufrage profond synchrones au décor.
- Détail de conception: dispositifs encastrés vers l'avant.
- Évier surélevé ergonomique.



**KING
25541**

Sherwood black | Sherwood black
Sherwood black | Sherwood black

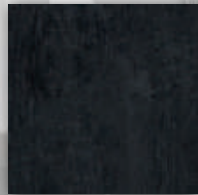
CLEAF



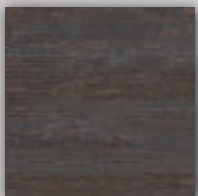
King 25501



King 25521



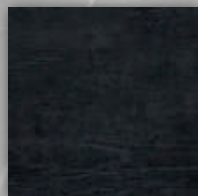
King 25541



King 25511



King 25531



King 25551





VIDA
26122

Kaschmir Hochglanz | Cashmere high gloss
Kasjmier hoogglans | Cachemire brillante

FREE
20077

Palazio Gold | Palazio Gold
Palazio Gold | Palazio Gold

Besonderheiten | Specials | Specials | Specials

- Freistehende Raumteiler - Küchenplanung.
- Sockel aus Frontmaterial passend zur Küchenfront.

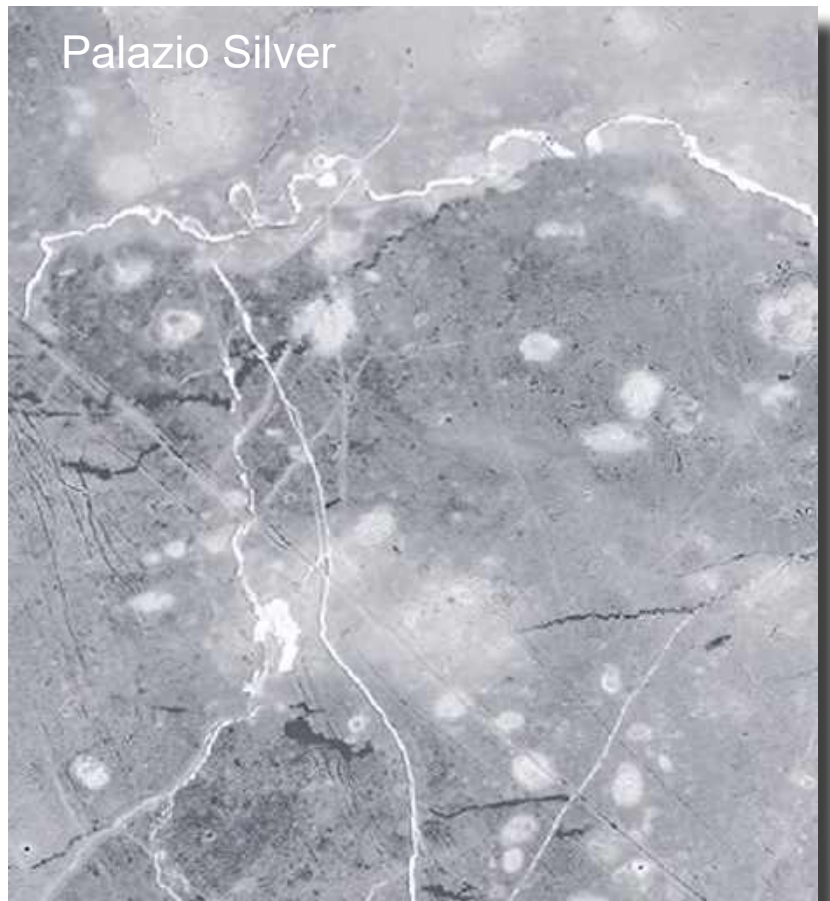
- Free-standing room divider - kitchen planing.
- Plinth in front material matching the kitchen front.

- Vrijstaande ruimteverdeler - keukenplanning.
- Plint in frontmateriaal passend bij het keukenfront.

- Planification de cuisine indépendante comme cloison de séparation.
- Socle en matériau de façade assorti à la façade de la cuisine.



Palazio Gold



Palazio Silver



Besonderheiten | Specials | Specials | Specials

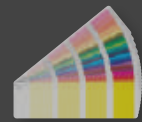
- Abgerundete Unter- & Hängeschränke (RONDO).
- Auszugstablär.
- Hochgebauter Geschirrspüler.
- Rounded base- & wall units (RONDO).
- Pull-out shelf.
- Raised dishwasher.

- Ronde onder- & bovenkasten (RONDO).
- Uittrek plateau.
- Hoog geplaatste vaatwasser.
- Meubles bas & hauts arrondies (RONDO).
- Tablette coulissante.
- Lave-vaisselle surélevé.



RINO
501215

Seidengrau | Silky grey
Zijdegrijs | Gris soyeux



FREE
20019

Metallic indigoblau | Indigo Blue Metallic
Indigoblauw metallic | Metallic bleu indigo







VADA
400011

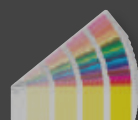
Premiumweiß | Premium white
Premium wit | Blanc primaire

VADA
RAL

Orange | Orange
Oranje | Orange

RINO
511209

Schwarz hochglanz | Black high gloss
Zwart hooggls | Noir haute brillance





Besonderheiten | Specials | Specials | Specials

- Multicorner in Frontdekor.
- Lamellensockel in schwarz für Muldenlüfter.
- Jalousierollladenschrank in SMAT Schwarz matt.

- Multicorner in front decor.
- Slatted plinth at the island for hob.
- Roller shutter unit in SMAT black matt.

- Multicorner in front decor.
- Lamellen plint in het eiland voor kookplaat.
- Rolluikkast in SMAT zwart mat.

- Multicorner in décor de façade.
- Socle à lamelles dans l'îlot pour la cuisson.
- Armoire a volets roulants en SMAT noir mat.



FREE
20069

Signalrot | Chili Red
Signaalrood | Rouge cerise

FREE
20066

Tiefseeblau | Deep Sea Blue
Diepzeeblauw | Bleu outremer



ES GIBT **KÜCHEN**,
DA SPÜRT MAN DEUTLICH:

DIE SIND BESONDERS.
WORAN DAS LIEGT,
IST MANCHMAL NICHT
GLEICH AUSZUMACHEN,
DENN DIE BESONDERHEIT,
DIE STECKT OFT IM DETAIL.

ES IST DIE
MIT BEDACHT GEPLANTE,
DIE EINE PERSÖNLICHE NOTE INTEGRIERT,
UND DIE MIT DEN KLEINEN DETAILS IN SERIE.

ALLES DINGE DIE AUS EINER GUTEN
EINE BESONDERE KÜCHE MACHEN.

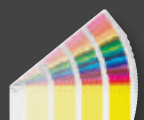
KURZUM IHRE KÜCHE – MADE IN GERMANY - SINCE 1923.





PORT C
RAL

Magnolia | Ivory
Magnolia | Magnolia







COMO
685204

Karbongrau | Carbon grey
Carbongrijs | Gris carbone

COMO
685203

Seidengrau | Silky grey
Zijdegrijs | Gris soyeux



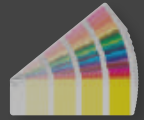
Besonderheiten | Specials | Specials | Specials

- Landhausfronten in individueller Breite lieferbar.
- Schubkastenblende profiliert.
- Bank- und Tischgestelle in Edelstahl und Schwarz matt lieferbar.
- Country-style fronts available in individual widths.
- Profiled drawer front.
- Bench and table frames available in stainless steel and black matt.
- Landhuisfronten in individuele breedtes leverbaar.
- Ladepaneel geprofileerd.
- Bank- en tafelonderstel verkrijgbaar in roestvrij staal en zwart mat.
- Façades de maisons de campagne disponibles en largeurs individuelles.
- Bandeau de tiroir profilée.
- Châssis de banc et table disponibles en acier inoxydable et noir mat.



PORT D
420011

Premiumweiß | Premium white
Premiumwit | Blanc primaire





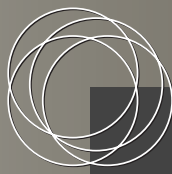
Besonderheiten | Specials | Specials | Specials

- Kranzleiste, Pilaster und Pilastersockel in Landhaus-Optik.
- Schubladenblende profiliert.
- Spülstein von Villeroy & Boch.

- Cornice, pilaster and pilaster-plinth in country-look.
- Profiled drawer front.
- Sink from Villeroy & Boch.

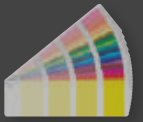
- Kranslijst, pilaster en plint pilaster in landhuisstijl.
- Ladepaneel geprofileerd.
- Spoelbak van Villeroy & Boch.

- Corniche, pilastre et socle de pilastre en style maison de campagne.
- Bandeau de tiroir profilée.
- Evier de Villeroy & Boch.



PORT E
421011

Premiumweiß | Premium white
Premiumwit | Blanc primaire



PORT A



PORT B



PORT C



PORT D



PORT E



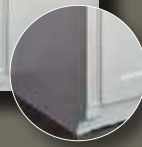
PORT F



PORT G



**Pilaster | Pilaster |
Pilaster | Pilastre**



**Kranz | Cornice |
Kranslijst | Corniche**



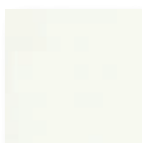


**PORT E
RAL**

Achatgrau | Agate grey
Agaatgrijs | Gris agate



Standardfarben:
Standard colours:
Standaard kleuren:
Couleurs standard:



Premiumweiß
Premium white
Pemiunwit
Blanc primaire



Schwarz matt
Black matt
Zwart mat
Noir mat



Kaschmir
Cashmere
Kasjmier
Cachemire



Ultraweiß
Ultra white
Ultrawit
Ultra blanc



Seidengrau
Silky grey
Zijdegrijs
Gris soyeux



Rauchblau
Smoke blue
Rookblauw
Bleu fumé



Platingrau
Platinum grey
Platinumgrijs
Gris platine



Karbongrau
Carbon grey
Carbongrijs
Gris carbone



Oliv
Olive
Olijf
Olive



Angoragrau
Angora grey
Angora grijs
Gris angora



Altrosa
Antique pink
Oud roze
Vieux rose



+ RAL & NCS



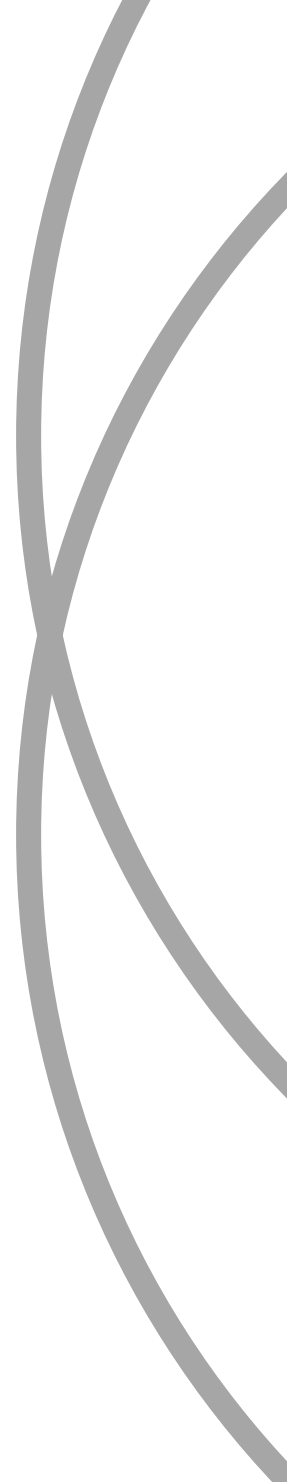
Schublade ebenfalls als Rahmenfront Drawer also as framed front Lade ook als omlijst front Tiroir également comme façade encadrée

Hauswirtschaftsraum | Utility Room |
Bijkeuken | Buanderie



Modernes Wohnen und Arbeiten in einem |
Modern living and working in one |
Modern wonen en werken in één |
Vivre et travailler de façon moderne en un

Besonderheiten | Specials | Specials | Specials



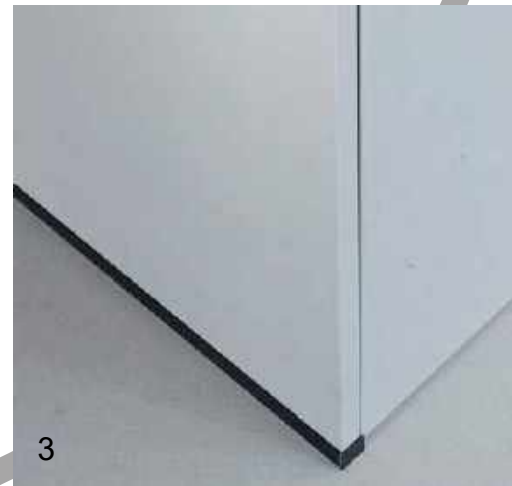
Besonderheiten | Specials | Specials | Specials



1



2



3



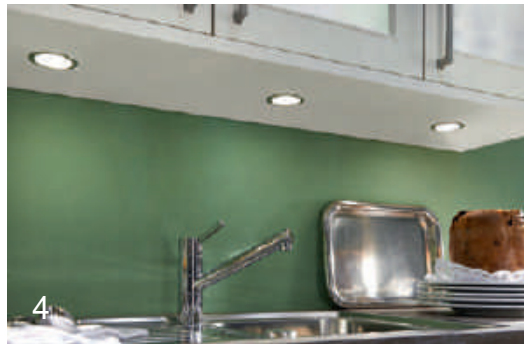
4



5

- 1) 11° Unterschränke seitlich | 11° angled base units | 11° schuine onderkast | 11° Meubles bas latérales
- 2) Trigon | Trigon | Trigon | Trigon
- 3) Wangenschuh in schwarz | Plinth shoe in black | Stollenschoen in zwart | Patin de joue en noir
- 4) Schubkastenblende Senza | Drawer front panel Senza | Ladepaneel Senza | Façade de tiroir Senza
- 5) Sockelübergreifende Front | Plinth overlapping front | Plint overlappende front | Façade recouvrant le socle

Beleuchtung | Lighting | Verlichting | Éclairage



- 1) LED-Unterbauleuchte „Retangolo“ | Built-under LED lamp „Retangolo“ | LED-onderbowlamp ‚Retangolo‘ | Lampe LED intégrée « Retangolo »
- 2) LED-Einbauleuchte „Manila IV“ | Recessed LED light „Manila IV“ | LED-inbowlamp ‚Manila IV‘ | Lampe LED encastrée « Manila IV »
- 3) LED-Glasbodenleuchte „Glass Point“ | LED illuminated glass shelf „Glass Point“ | Led-glasplaatlamp ‚Glas Point‘ | Eclairage LED tablette en verre « Glas Point »
- 4) LED-Einbaustrahler „Nova Eco“ | Recessed LED spotlight „NOVA ECO“ | Led-inbouwspot ‚Nova Eco‘ | Spot encastrable LED « Nova Eco »
- 5) LED-Nischenbeleuchtung „Down“ | „Down“ LED lighting | LED-nisverlichting ‚Down‘ | Eclairage de crédence LED « Down »
- 6) LED-Einbaustrahler „Moonlight“ | Recessed LED spotlight „Moonlight“ | LED-inbouwspot ‚Moonlight‘ | Spot encastrable LED « Moonlight »
- 7) LED-Griffprofileuchte „Nubio“ | LED handle profile light „Nubio“ | LED-greepprofiellamp ‚Nubio‘ | Eclairage LED de la poignée profilée « Nubio »

Abfallsysteme | Waste systems | Afvalsystemen | Poubelles



1



2



3



4



5

- 1) Abfallsystem „Flexx“ | „Flexx“ waste system | Afvalstysteem ‚Flexx‘ | Système poubelle « Flexx »
- 2) Abfallsystem „Ninka“ | „Ninka“ waste system | Afvalstysteem ‚Ninka‘ | Système poubelle « Ninka »
- 3) Abfallsystem „Euro Cargo“ | „Euro Cargo“ waste system | Afvalstysteem ‚Euro Cargo‘ | Système poubelle « Euro Cargo »
- 4) Abfallsystem „Boxx 55/60R“ | „Boxx 55/60R“ waste system | Afvalstysteem ‚Boxx 55/60R‘ | Système poubelle « Boxx 55/60R »
- 5) Abfallsystem „Rondo“ | „Rondo“ waste system | Afvalstysteem ‚Rondo‘ | Système poubelle « Rondo »



1



2



3



4



5

Technologie & design

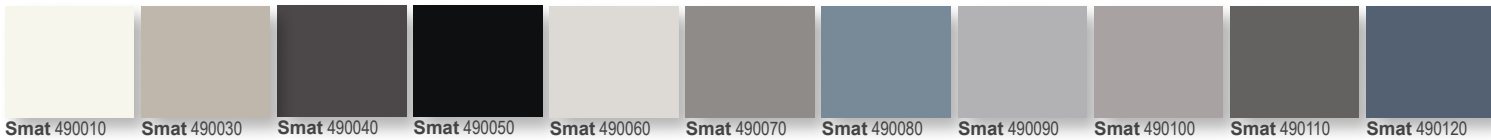
Technologie & conception

- 1) Multicorner im Hängeschrank | Multicorner at wall unit | Multicorner voor bovenkasten | Multicorner dans le meuble haut
 2) Multicorner im Hängeschrank | Multicorner at wall unit | Multicorner voor bovenkasten | Multicorner dans le meuble haut
 3) Multicorner im Unterschrank | Multicorner at base unit | Multicorner voor onderkasten | Multicorner dans le meuble bas
 4) Multicorner im Unterschrank | Multicorner at base unit | Multicorner voor onderkasten | Multicorner dans le meuble bas
 5) Multicorner im Unterschrank | Multicorner at base unit | Multicorner voor onderkasten | Multicorner dans le meuble bas

Multicorner im Seitenschrank siehe Seite 39 & 55 | Multicorner at tall unit see page 39 & 55 | Multicorner voor hoge kasten zie pagina 39 & 55 | Multicorner dans l'armoire voir page 39 & 55

Technik & Design

Technology & design



1) Tandem Side (links) & Tandem Side 1/2 (rechts) | Tandem Side (left) & Tandem Side 1/2 (right) | Tandem Side (links) & Tandem Side 1/2 (rechts) | Tandem Side (gauche) & Tandem Side 1/2 (droite)

2) Jalousieschränke passend zu allen SMAT Farben | Shutter units matching all SMAT colours | Rolluikkasten passend bij alle SMAT kleuren | Armoires à rideaux assorties à toutes les couleurs SMAT



1



2



3



4



5



6

Technologie & design

Technologie & conception

- 1) Tablarauszug | Pull-out shelf | Uittrekplateau | Tablette coulissante
- 2) Steckdosenleiste „Backflip“ | Socket strip „Backflip“ | Stopcontactlijst ‚Backflip‘ | Bloc multiprises « Backflip »
- 3) Neue Besenschrankausstattung | New broom equipment | Nieuwe bezemkastuitrusting | Nouvel équipement pour armoire à balais
- 4) Pocket-Türen | Pocket doors | Pocketdeuren | Pocket portes
- 5) Ausziehtisch | Pull-out table | Uittrektafel | Table escamotable
- 6) Auszüge bis 240 cm (über 2 Korpusse) möglich | Pull-outs (across 2 carcasses) up to 240 cm | Uittrekelementen tot 240 cm (over 2 kasten) mogelijk | Coulissants jusqu'à 240 cm (le long de 2 corps)

Technik & Design

Technology & design



- 1) Überbreite Auszüge | extra wide pull outs | uittrekelementen extra breed | coulissants extra large
- 2) Eckunterschrank Space corner | Corner base unit Space Corner | Hoekonderkast Space corner | Meuble bas d'angle avec Space Corner
- 3) Funktionsschrank bis 120 cm Breite möglich | Functional cabinet up to 120 cm wide | Functionele kast tot 120 cm breed | Armoire de rangement jusqu'à 120 cm de large
- 4) Eckunterschrank LeMans | Corner base unit LeMans | Hoekonderkast LeMans | Meuble bas d'angle LeMans
- 5) Karussellschrank | Carousel unit | Carrouselkasten | Meuble à tourniquet



Technologie & design

Technologie & conception

- 1) Klappen | Flap doors | Kleppen | Abattants
- 2) Lifttüren | Lift-up doors | Liftdeuren | Portes relevables
- 3) Faltilifttüren | Upward folding doors | Vouwliftdeuren | Portes pliantes relevables

Technik & Design

Technology & design



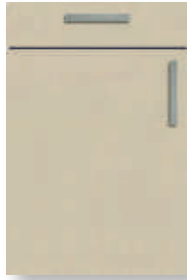
- 1) Barfachklappen | Bar compartment flaps | Barkleppen | Abattants de bar
- 2) 2-Jumbo-Optik, verstiftet | 2-Jumbo-Optics, pin-joined | 2-Jumbo-Optiek, gekoppeld | 2-Jumbo-Optique, goupillée
- 3) Gleittürenschrank | Sliding door unit | Schuifdeuren kasten | Portes coulissantes
- 4) Seitliche Boxsides in Klarglas | Boxsides in clear glass | Boxsides in helder glas | Boxsides latéraux en verre transparent
- 5) Pulverbeschichtete Griffe | Powdercoated handles | Grepen met poedercoating | Poignées revêtues par poudre

**Mila
PG 1**

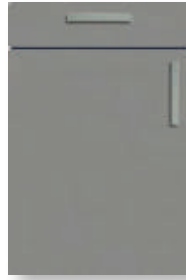
Melamin matt
Melamine matt
Melamine mat
Mélaminé mat



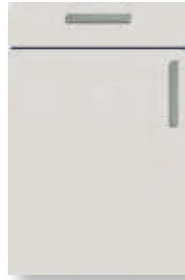
Mila 10202
Premiumweiß
Premium white
Premiumwit
Blanc primaire



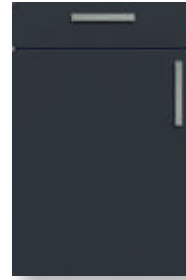
Mila 10082
Kaschmir
Cashmere
Kasjmier
Cachemire



Mila 10191
Platingrau
Platinum grey
Platinumgrijs
Gris platine



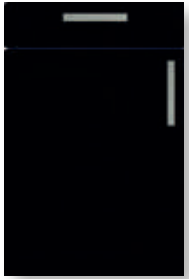
Mila 10132
Seidengrau
Silky grey
Zijdegrijs
Gris soyeux



Mila 10151
Karbongrau
Carbon grey
Carbongrijs
Gris carbone



Mila 10171
Angoragrau
Angora grey
Angora grijs
Gris angora



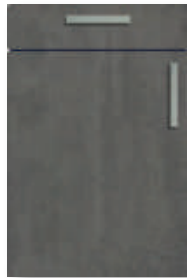
Mila 10182
Schwarz matt
Black matt
Zwart mat
Noir mat

**Tema
PG 1**

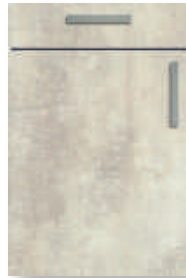
Melamin matt
Melamine matt
Melamine mat
Mélaminé mat



Tema 18501
Beton hell
Light concrete
Licht beton
Béton clair



Tema 18511
Beton dunkel
Dark concrete
Donker beton
Béton foncé



Tema 18541
Beton Weiß
White concrete
Wit beton
Béton blanc

**Tema uni
PG 1**

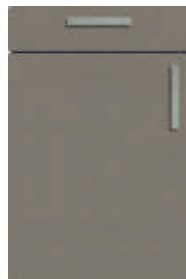
Melamin matt
Melamine matt
Melamine mat
Mélaminé mat



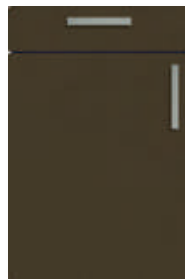
Tema uni 185791
Edelstahlfarbig
Stainless steel coloured
Rvs-kleur
Couleur inox



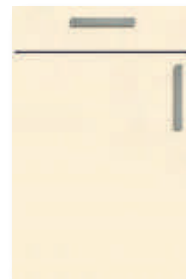
Tema uni 185612
Alpinweiß
Alpine white
Alpinewit
Blanc alpin



Tema uni 185621
Achatgrau
Agate grey
Agaatgrijs
Gris agate



Tema uni 185631
Bronze
Bronze
Brons
Bronze



Tema uni 185762
Magnolia
Ivory
Magnolia
Magnolia



Tema uni 185771
Magicgrau
Magic grey
Magicgrijs
Gris magic

**Tema uni
PG 1**

Melamin matt
Melamine matt
Melamine mat
Mélaminé mat

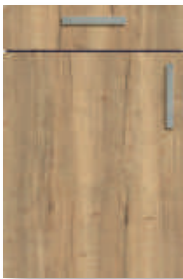


Tema uni 185781

Anthrazit
Anthracite
Antraciet
Anthracite

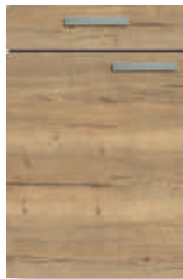
**Tema wood
PG 1**

Melamin matt
Melamine matt
Melamine mat
Mélaminé mat



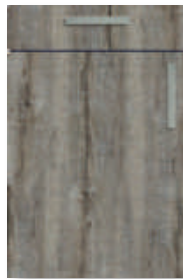
Tema wood 12161

Steineiche Natur senkrecht
Holm oak natural vertical
Steeneiken natuur verticaal
Chêne vert naturel vertical



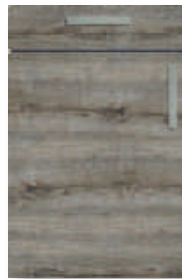
Tema wood 12201

Steineiche Natur waagerecht
Holm oak natural horizontal
Steeneiken natuur horizontaal
Chêne vert naturel horizontal



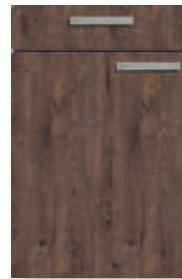
Tema wood 185681

Raucheiche senkrecht
Smoked oak vertical
Rookeiken verticaal
Chêne fumé vertical



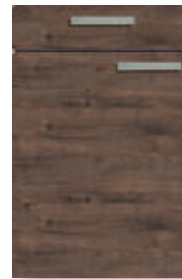
Tema wood 185691

Raucheiche waagerecht
Smoked oak horizontal
Rookeiken horizontaal
Chêne fumé horizontal



Tema wood 185701

Eiche Classic senkrecht
Oak classic vertical
Eiken Classic verticaal
Chêne Classic vertical



Tema wood 185711

Eiche Classic waagerecht
Oak classic horizontal
Eiken Classic horizontaal
Chêne Classic horizontal



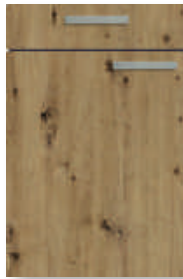
Tema wood 185721

Steineiche Tabak senkrecht
Holm oak tobacco vertical
Steeneiken tabak verticaal
Chêne vert tabac vertical



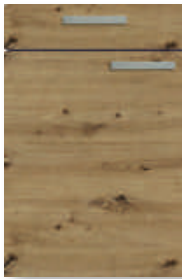
Tema wood 185731

Steineiche Tabak waagerecht
Holm oak tobacco horizontal
Steeneiken tabak horizontaal
Chêne vert tabac horizontal



Tema wood 185741

Artisan Eiche senkrecht
Artisan Oak vertical
Artisan Eiken verticaal
Chêne Artisan vertical



Tema wood 185751

Artisan Eiche waagerecht
Artisan Oak horizontal
Artisan Eiken horizontaal
Chêne Artisan horizontal

**Free
PG 2**

Melamin matt
Melamine matt
Melamine mat
Mélaminé mat



Free 20001

Steingrau
Stone grey
Steengrijs
Gris argile



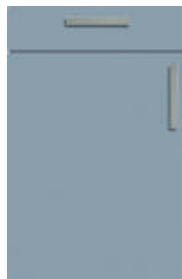
Free 20003

Taupe dunkel
Dark taupe
Donker taupe
Gris argile foncé



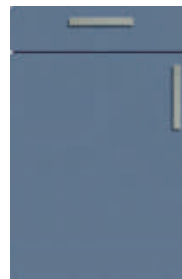
Free 20004

Aluminium
Aluminium
Aluminium
Aluminium



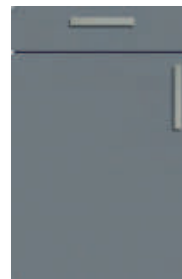
Free 20005

Denimblau
Denim Blue
Denimblauw
Bleu denim



Free 20006

Rauchblau
Smoke Blue
Rookblauw
Bleu fumé



Free 20007

Monumentgrau
Monument Grey
Monumentgrijs
Gris céladon

Free
PG 2

Melamin matt
Melamine matt
Melamine mat
Mélaminé mat



Free 20008

Onyxgrau
Onyx Grey
Onyxgrijs
Gris onyx



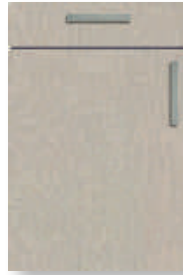
Free 20009

Metal Rock anthrazit
Anthracite Metal Rock
Metal rock antraciet
Pierre métallisée anthracite



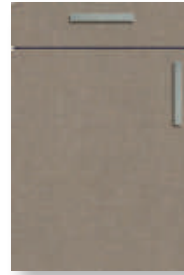
Free 20010

Textil beige
Beige Textile
Textiel beige
Textile beige



Free 20011

Textil grau
Grey Textile
Textiel grijs
Textile gris



Free 20012

Leinen terra
Brown Linen
Linnen terra
Lin taupe



Free 20013

Leinen anthrazit
Anthracite Linen
Linnen antraciet
Lin anthracite



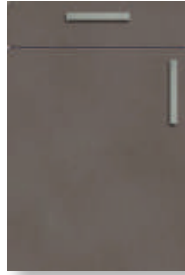
Free 20014

Jura Schiefer anthrazit
Anthracite Jura Slate
Jura leisteen antraciet
Ardoise du Jura anthracite



Free 20015

Steelcut titangrau
Titanium Grey Steelcut
Steelcut titanium grijs
Fer forgé gris titane



Free 20016

Steelbrush cubanit
Cubanite Steelbrush
Staalborstel cubaniet
Acier brossé cubanite



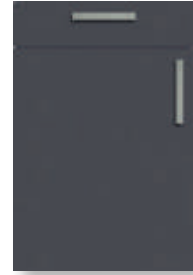
Free 20017

Metal Fabric anthrazit
Anthracite Metal Fabric
Metal Fabric antraciet
Fabric Metal anthracite



Free 20018

Metallic platingrau
Platinum Grey Metallic
Platinumgrijs metallic
Metallic gris platine



Free 20019

Metallic indigoblau
Indigo Blue Metallic
Indigoblauw metallic
Metallic bleu indigo



Free 20020

Samtgold gebürstet
Brushed Brass
Geborsteld fluweel goud
Laiton brossé



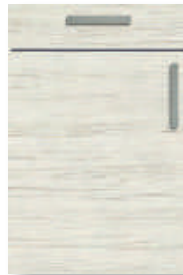
Free 20021

Golden Patina
Golden Patina
Golden Patina
Golden Patina



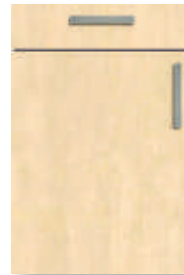
Free 20022

Whitewood senkrecht
Whitewood vertical
Whitewood verticaal
Whitewood vertical



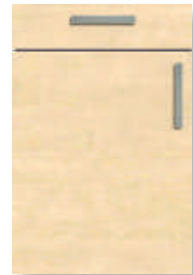
Free 20023

Whitewood waagrecht
Whitewood horizontal
Whitewood horizontaal
Whitewood horizontal



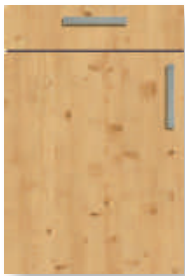
Free 20024

Mainau Birke senkrecht
Mainau Birch vertical
Mainau-berk verticaal
Bouleau de Mainau vertical



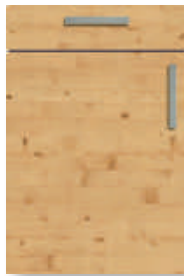
Free 20025

Mainau Birke waagrecht
Mainau Birch horizontal
Mainau-berk horizontaal
Bouleau de Mainau horizontal



Free 20026

Astfichte natur senkrecht
Natural Pine vertical
Wit hout met knoesten natuur vert.
Pin noué naturel vertical



Free 20027

Astfichte natur waagrecht
Natural Pine horizontal
Wit hout met knoesten natuur hor.
Pin noué naturel horizontal



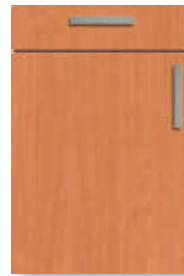
Free 20028

Ellmau Buche senkrecht
Ellmau Beech vertical
Beuk Ellmau verticaal
Hêtre du Tyrol vertical



Free 20029

Ellmau Buche waagrecht
Ellmau Beech horizontal
Beuk Ellmau horizontaal
Hêtre du Tyrol horizontal



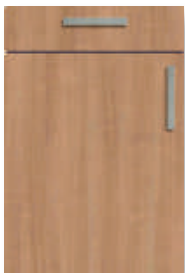
Free 20030

Bavaria Buche senkrecht
Bavaria Beech vertical
Beuk Bavaois verticaal
Hêtre de Bavière vertical



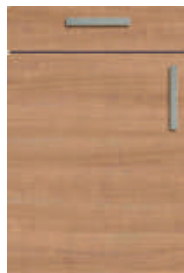
Free 20031

Bavaria Buche waagrecht
Bavaria Beech horizontal
Beuk Bavaois horizontaal
Hêtre de Bavière horizontal



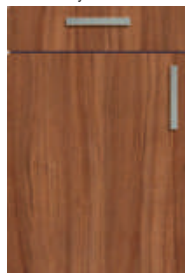
Free 20032

Kirschbaum Verona senkrecht
Verona Cherry vertical
Kersenboom Verona verticaal
Merisier Verona vertical



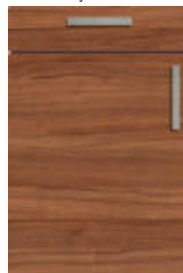
Free 20033

Kirschbaum Verona waagrecht
Verona Cherry horizontal
Kersenboom Verona horizontaal
Merisier Verona horizontal



Free 20034

Dijon Nussbaum natur senkrecht
Natural Dijon Walnut vertical
Dijon notenboom natuur vert.
Noyer de Bourgogne naturel vert.



Free 20035

Dijon Nussbaum natur waagrecht
Natural Dijon Walnut horizontal
Dijon notenboom natuur hor.
Noyer de Bourgogne naturel hor.



Free 20036

Stadlholz senkrecht
Attic Wood vertical
Schuur hout verticaal
Bois de grange vertical



Free 20037

Stadlholz waagrecht
Attic Wood horizontal
Schuur hout horizontaal
Bois de grange horizontal

Free PG 2

Melamin matt
Melamine matt
Melamine mat
Mélaminé mat



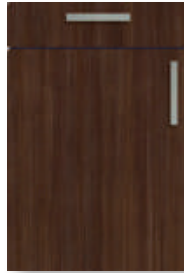
Free 20038

Pasadena Pinie senkrecht
Pasadena Pine vertical
Pijnboom Pasadena verticaal
Pin Pasadena vertical



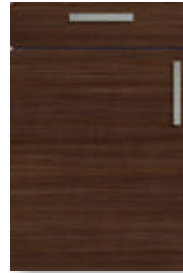
Free 20039

Pasadena Pinie waagerecht
Pasadena Pine horizontal
Pijnboom Pasadena horizontaal
Pin Pasadena horizontal



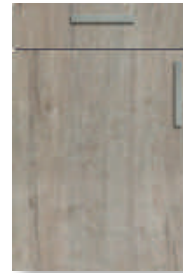
Free 20040

Finline Metallic braun senkrecht
Brown Finline Metallic vert.
Finline metallic bruin vert.
Finline Metallic café vertical



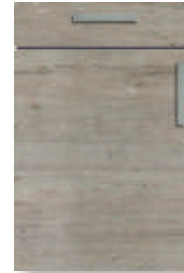
Free 20041

Finline Metallic braun waagerecht
Brown Finline Metallic hor.
Finline metallic bruin hor.
Finline Metallic café hor.



Free 20042

Halifax Eiche lasiert sandgrau senk.
Sand Grey Glazed Halifax Oak vert.
Halifax eiken geglaazuurd zandgrijs vert.
Chêne Halifax cèrusé sable vert.



Free 20043

Halifax Eiche lasiert sandgrau waag.
Sand Grey Glazed Halifax Oak hor.
Halifax eiken geglaazuurd zandgrijs hor.
Chêne Halifax cèrusé sable hor.



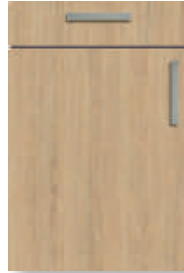
Free 20044

Halifax Eiche Zinn senkrecht
Pewter Halifax Oak vertical
Halifax eiken tin verticaal
Chêne Halifax zinc vertical



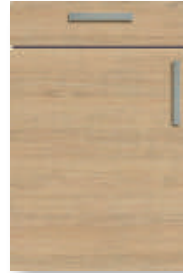
Free 20045

Halifax Eiche Zinn waagerecht
Pewter Halifax Oak horizontal
Halifax eiken tin horizontaal
Chêne Halifax zinc horizontal



Free 20046

Vicenza Eiche senkrecht
Vicenza Oak vertical
Eiken Vicenza verticaal
Chêne Vicenza vertical



Free 20047

Vicenza Eiche waagerecht
Vicenza Oak horizontal
Eiken Vicenza horizontaal
Chêne Vicenza horizontal



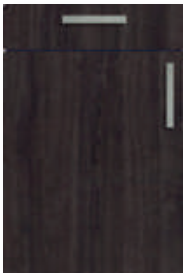
Free 20048

Sherman Eiche cognacbraun senk.
Cognac Brown Sherman Oak vert.
Eiken Sherman cognac vert.
Chêne Sherman cognac vert.



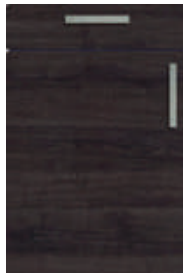
Free 20049

Sherman Eiche cognacbraun waag.
Cognac Brown Sherman Oak hor.
Eiken Sherman cognac hor.
Chêne Sherman cognac hor.



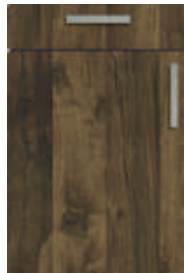
Free 20050

Sherman Eiche anthrazit senk.
Anthracite Sherman Oak vert.
Eiken Sherman antraciet vert.
Chêne Sherman anthracite vert.



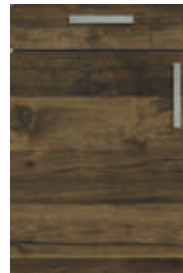
Free 20051

Sherman Eiche anthrazit waag.
Anthracite Sherman Oak hor.
Eiken Sherman antraciet hor.
Chêne Sherman anthracite hor.



Free 20052

Hunton Eiche dunkel senk.
Dark Hunton Oak vertical
Hunton eiken donker verticaal
Chêne de Hunton foncé vertical



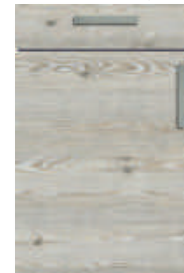
Free 20053

Hunton Eiche dunkel waag.
Dark Hunton Oak horizontal
Hunton eiken donker hor.
Chêne de Hunton foncé hor.



Free 20054

Berglärche weiß senkrecht
White Mountain Larch vertical
Berglariks wit verticaal
Mézèle blanc vertical



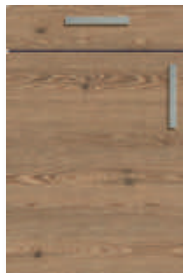
Free 20055

Berglärche weiß waagrecht
White Mountain Larch hor.
Berglariks wit horizontaal
Mézèle blanc horizontal



Free 20056

Berglärche braun senkrecht
Brown Mountain Larch vertical
Berglariks bruin verticaal
Mélèze marron vertical



Free 20057

Berglärche braun waagrecht
Brown Mountain Larch hor.
Berglariks bruin horizontaal
Mélèze marron horizontal



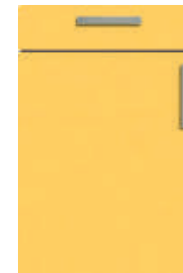
Free 20058

Berglärche thermobraun senk.
Thermo Brown Mountain Larch vert.
Berglariks thermisch bruin vert.
Mélèze brun thermo vertical



Free 20059

Berglärche thermobraun waag.
Thermo Brown Mountain Larch hor.
Berglariks thermisch bruin hor.
Mélèze brun thermo horizontal



Free 20060

Maisgelb
Maize Yellow
Maisgeel
Jaune maïs



Free 20061

Brillantgelb
Brilliant Yellow
Brijlantgeel
Jaune tournesol



Free 20062

Maigrün
May Green
Mei groen
Vert printemps



Free 20063

Farngrün
Fern Green
Varen groen
Vert fougère



Free 20064

Waldgrün
Forest Green
Bosgroen
Vert sapin



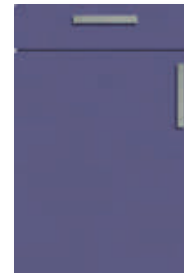
Free 20065

Türkisgrün
Turquoise Blue
Turquoise groen
Bleu turquoise



Free 20066

Tiefseeblau
Deep Sea Blue
Diepzeblauw
Bleu outremer

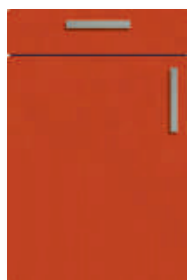


Free 20067

Violett
Violet
Violet
Violet

Free
PG 2

Melamin matt
Melamine matt
Melamine mat
Mélaminé mat



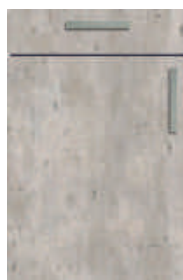
Free 20068
Indianrot
Indian Red
Indian rood
Rouge indien



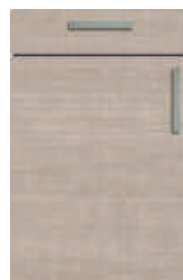
Free 20069
Signalrot
Chili Red
Signaalrood
Rouge cerise



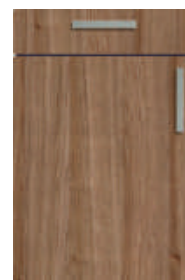
Free 20070
Burgundrot
Burgundy Red
Bourgondiërood
Rouge bordeaux



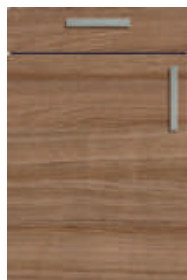
Free 20072
Natural Concrete
Natural Concrete
Natural Concrete
Natural Concrete



Free 20073
Pale Tamarak
Pale Tamarak
Pale Tamarak
Pale Tamarak



Free 20074
Smart Ash senkrecht
Smart Ash vertical
Smart Ash verticaal
Smart Ash vertical



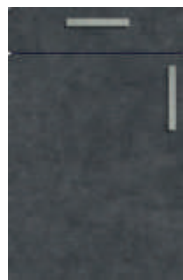
Free 20075
Smart Ash waagerecht
Smart Ash horizontal
Smart Ash horizontaal
Smart Ash horizontal



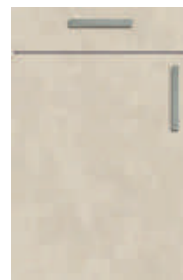
Free 20077
Palazio Gold
Palazio Gold
Palazio Gold
Palazio Gold



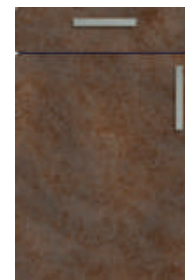
Free 20078
Palazio Silver
Palazio Silver
Palazio Silver
Palazio Silver



Free 20079
Urbanstone Graphite
Urbanstone Graphite
Urbanstone Graphite
Urbanstone Graphite



Free 20080
Urbanstone Chalk
Urbanstone Chalk
Urbanstone Chalk
Urbanstone Chalk

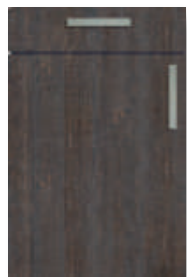


Free 20081
Stardust
Stardust
Stardust
Stardust

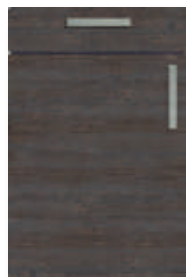
King
PG 2

Melamin matt
Melamine matt
Melamine mat
Mélaminé mat

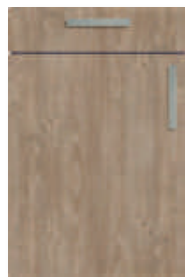
CLEAF



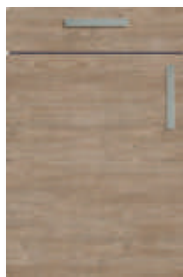
King 25501
Sherwood dark senkrecht
Sherwood dark vertical
Sherwood dark verticaal
Sherwood dark vertical



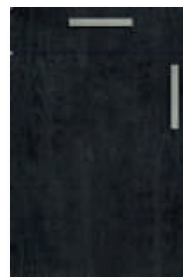
King 25511
Sherwood dark waagerecht
Sherwood dark horizontal
Sherwood dark horizontaal
Sherwood dark horizontal



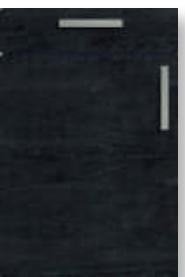
King 25521
Sherwood light senkrecht
Sherwood light vertical
Sherwood light verticaal
Sherwood light vertical



King 25531
Sherwood light waagerecht
Sherwood light horizontal
Sherwood light horizontaal
Sherwood light horizontal



King 25541
Sherwood black senkrecht
Sherwood black vertical
Sherwood black verticaal
Sherwood black vertical



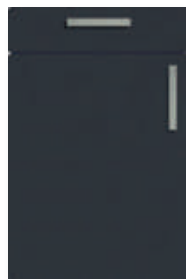
King 25551
Sherwood black waagerecht
Sherwood black horizontal
Sherwood black horizontaal
Sherwood black horizontal

Pure
PG 2

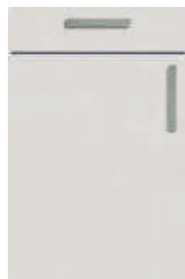
UV-Lack supermatt
UV super matt lacquer
UV-supermatlak
Laque UV extra mate



Pure 31002
Premiumweiß supermatt
Premium white super matt
Premiumwit supermat
Blanc primaire extra mat



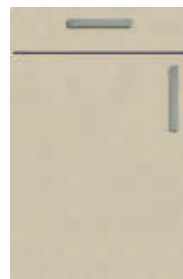
Pure 31032
Karbongrau supermatt
Carbon grey super matt
Carbongrijs supermat
Gris carbone extra mat



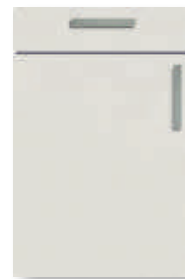
Pure 31041
Seidengrau supermatt
Silky grey super matt
Zijdegrijs supermat
Gris soyeux extra mat



Pure 31072
Schwarz supermatt
Black super matt
Zwart supermat
Noir extra mat



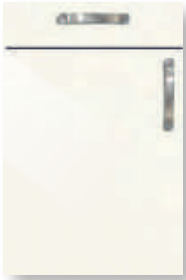
Pure 31082
Kaschmir supermatt
Cashmere super matt
Kasjmier supermat
Cachemire extra mat



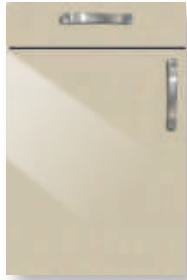
Pure 31101
Angoragrau supermatt
Angora grey super matt
Angora grijs supermat
Gris angora extra mat

Vida PG 2

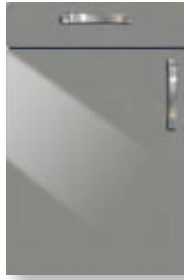
UV-Lack Hochglanz
UV High gloss lacquer
UV-Hoogglanslak
Laque UV Haute brillance



Vida 26002
Premiumweiß Hochglanz
Premium white high gloss
Premiumwit hoogglans
Blanc primaire haute brillance



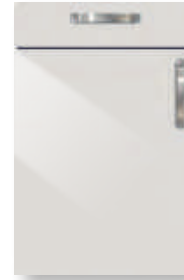
Vida 26122
Kaschmir Hochglanz
Cashmere high gloss
Kasjmier hoogglans
Cachemire haute brillance



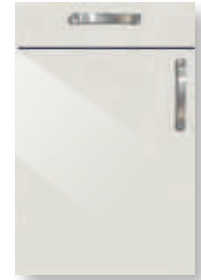
Vida 26092
Platingrau Hochglanz
Platinum grey high gloss
Platinumgrijs hoogglans
Gris platine haute brillance



Vida 26062
Schwarz Hochglanz
Black high gloss
Zwart hoogglans
Noir haute brillance



Vida 26112
Seidengrau Hochglanz
Silky grey high gloss
Zijdegrijs hoogglans
Gris soyeux haute brillance



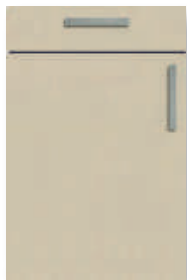
Vida 26131
Anoragrau Hochglanz
Angora grey high gloss
Anoragrijs hoogglans
Gris angora haute brillance

Feel PG 3

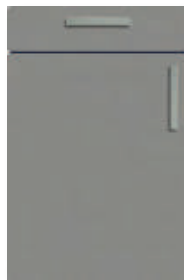
HPL-Schichtstoff supermatt
HPL laminate super matt
HPL-laminaat supermat
Stratifie HPL extra mat



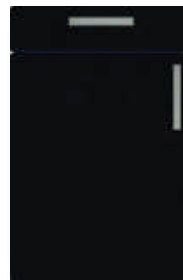
Feel 38082
Premiumweiß supermatt
Premium white super matt
Premiumwit supermat
Blanc primaire extra mat



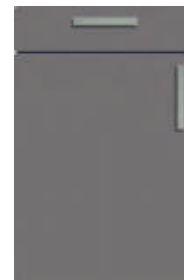
Feel 38032
Kaschmir supermatt
Cashmere super matt
Kasjmier supermat
Cachemire extra mat



Feel 38052
Platingrau supermatt
Platinum grey super matt
Platinumgrijs supermat
Gris platine extra mat



Feel 38072
Schwarz supermatt
Black super matt
Zwart supermat
Noir extra mat



Feel 38091
Ferro supermatt
Ferro super matt
Ferro supermat
Ferro extra mat

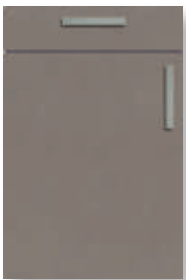


Feel 38101
Anoragrau supermatt
Angora grey super matt
Anoragrijs supermat
Gris angora extra mat

Icon PG 3

Melamin mit Prägung
Melamine with embossing
Melamine met structuur
Mélaminé avec gaufrage

CLEAF



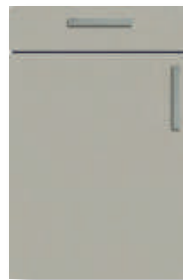
Icon 24001*
Ares Expanse
Ares Expanse
Ares Expanse
Ares Expanse



Icon 24002*
Matrix Vintage senkrecht
Matrix Vintage vertical
Matrix Vintage verticaal
Matrix Vintage vertical



Icon 24003*
Primofiore Arena
Primofiore Arena
Primofiore Arena
Primofiore Arena



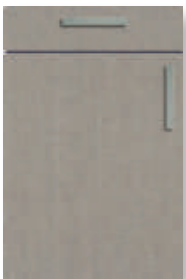
Icon 24004*
Primofiore Grigio
Primofiore Grigio
Primofiore Grigio
Primofiore Grigio



Icon 24005*
Primofiore Corda
Primofiore Corda
Primofiore Corda
Primofiore Corda



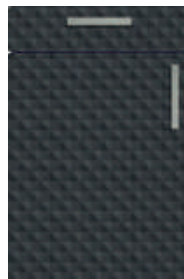
Icon 24008*
Alpaca Anversa senkrecht
Alpaca Anversa vertical
Alpaca Anversa verticaal
Alpaca Anversa vertical



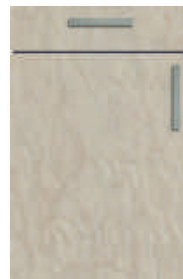
Icon 24009*
Alpaca Bruxelles senkrecht
Alpaca Bruxelles vertical
Alpaca Bruxelles verticaal
Alpaca Bruxelles vertical



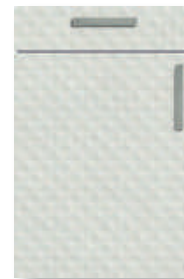
Icon 24010*
Ares Beton hellgrau
Ares Beton light grey
Ares Beton lichtgrijs
Ares Beton gris clair



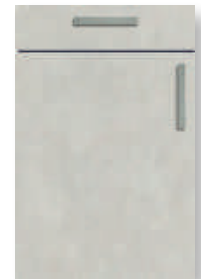
Icon 24011**
Cheope Nero
Cheope Nero
Cheope Nero
Cheope Nero



Icon 24012**
Duna Moura
Duna Moura
Duna Moura
Duna Moura



Icon 24013**
Cheope Total White
Cheope Total White
Cheope Total White
Cheope Total White



Icon 24014**
Mosaico Clear
Mosaico Clear
Mosaico Clear
Mosaico Clear

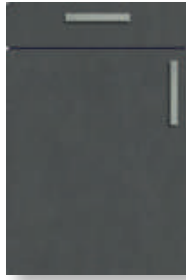
Icon PG 3

Melamin mit Prägung
Melamine with embossing
Melamine met structuur
Mélaminé avec gaufrage

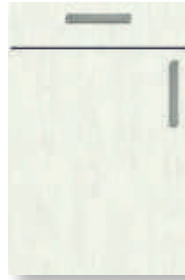
CLEAF



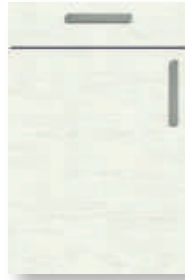
Icon 24015*
Ares Beton staubgrau
Ares Beton dusty grey
Ares Beton stofgrijs
Ares Beton gris poussièreux



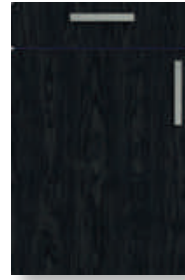
Icon 24016**
Mosaico Metallizzato
Mosaico Metallizzato
Mosaico Metallizzato
Mosaico Metallizzato



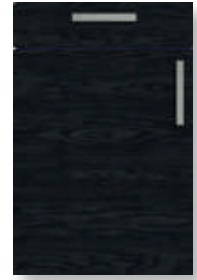
Icon 24020*
Millenium Total White senkrecht
Millenium Total White vertical
Millenium Total White verticaal
Millenium Total White vertical



Icon 24021*
Millenium Total White waagrecht
Millenium Total White horizontal
Millenium Total White horizontaal
Millenium Total White horizontal



Icon 24022*
Millenium Nero senkrecht
Millenium Nero vertical
Millenium Nero verticaal
Millenium Nero vertical



Icon 24023*
Millenium Nero waagrecht
Millenium Nero horizontal
Millenium Nero horizontaal
Millenium Nero horizontal



Icon 24024*
Millenium Watson senkrecht
Millenium Watson vertical
Millenium Watson verticaal
Millenium Watson vertical



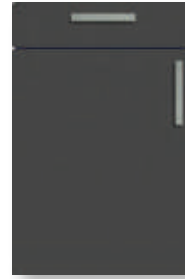
Icon 24025*
Millenium Watson waagrecht
Millenium Watson horizontal
Millenium Watson horizontaal
Millenium Watson horizontal



Icon 24026*
Millenium Nagold senkrecht
Millenium Nagold vertical
Millenium Nagold verticaal
Millenium Nagold vertical



Icon 24027*
Millenium Nagold waagrecht
Millenium Nagold horizontal
Millenium Nagold horizontaal
Millenium Nagold horizontal



Icon 24097
Dark Grey
Dark Grey
Dark Grey
Dark Grey

*)
Rückseite: wie Front mit Prägung
Back: same as front with embossing
Achterkant: als front met structuur
Face arrière: même que la façade avec gaufrage

**)
Rückseite: Farbton wie Front
Back: coloured as front
Achterkant: in frontkleur
Face arrière: la même couleur que la façade

Vada PG 3

Mikrolack matt
Microlacquer matt
Microlak mat
Microlaque mate



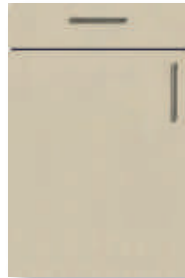
RAL-/NCS-Lackierung möglich.
Special laquer coating in RAL/NCS colour possible.
Speciale lak in RAL-/NCS-kleur mogelijk.
Laque spéciale coloris RAL/NCS possible.



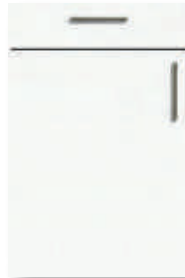
Vada 400011
Premiumweiß
Premium white
Premiumwit
Blanc primaire



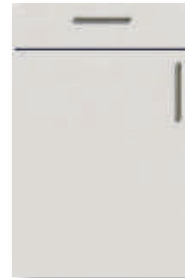
Vada 400017
Schwarz matt
Black matt
Zwart mat
Noir mat



Vada 400022
Kaschmir
Cashmere
Kasjmier
Cachemire



Vada 400028
Ultraweiß
Ultra white
Ultrawit
Ultra blanc



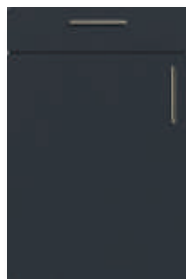
Vada 400029
Seidengrau
Silky grey
Zijdegrijs
Gris soyeux



Vada 400030
Rauchblau
Smoke blue
Rookblauw
Bleu fumé



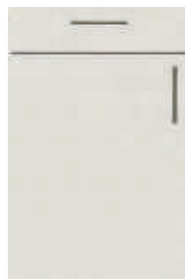
Vada 400031
Platingrau
Platinum grey
Platinumgrijs
Gris platine



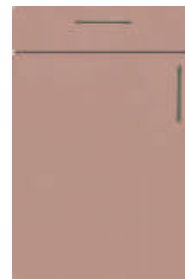
Vada 400032
Karbonrau
Carbon grey
Carbongrijs
Gris carbone



Vada 400033
Oliv
Olive
Olijf
Olive



Vada 400034
Angoragrau
Angora grey
Angora grijs
Gris angora



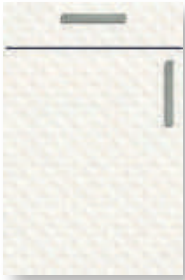
Vada 400036
Altrosa
Antique pink
Oud roze
Vieux rose

Tura PG 4

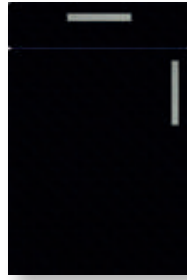
Mikrolack mit Prägung
Microlacquer with embossing
Microlak met structuur
Microlaque avec gaufrage



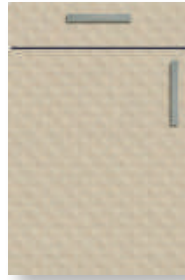
RAL-/NCS-Lackierung möglich.
Special laquer coating in RAL/NCS colour possible.
Speciale lak in RAL-/NCS-kleur mogelijk.
Laque spéciale coloris RAL/NCS possible.



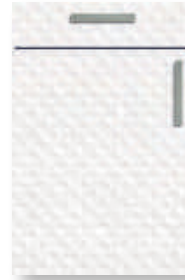
Tura 412011
Premiumweiß
Premium white
Premiumwit
Blanc primaire



Tura 412017
Schwarz matt
Black matt
Zwart mat
Noir mat



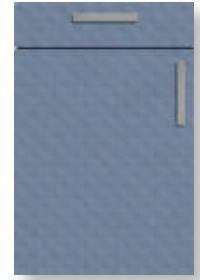
Tura 412022
Kaschmir
Cashmere
Kasjmier
Cachemire



Tura 412028
Ultraweiß
Ultra white
Ultrawit
Ultra blanc



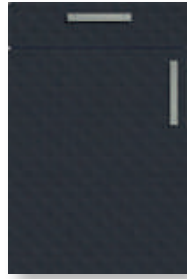
Tura 412029
Seidengrau
Silky grey
Zijdegrijs
Gris soyeux



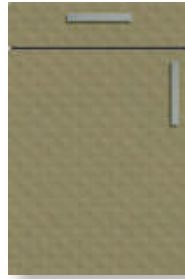
Tura 412030
Rauchblau
Smoke blue
Rookblauw
Bleu fumé



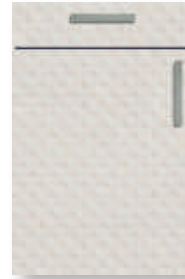
Tura 412031
Platingrau
Platinum grey
Platinumgrijs
Gris platine



Tura 412032
Karbongrau
Carbon grey
Carbongrijs
Gris carbone



Tura 412033
Oliv
Olive
Olijf
Olive



Tura 412034
Angoragrau
Angora grey
Angora grijs
Gris angora

Port A PG 5

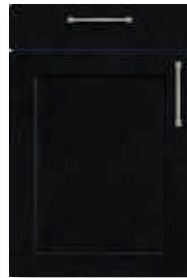
Mikrolack matt
Microlacquer matt
Microlak mat
Microlaque mate



RAL-/NCS-Lackierung möglich.
Special laquer coating in RAL/NCS colour possible.
Speciale lak in RAL-/NCS-kleur mogelijk.
Laque spéciale coloris RAL/NCS possible.



Port A 417011
Premiumweiß
Premium white
Premiumwit
Blanc primaire



Port A 417017
Schwarz matt
Black matt
Zwart mat
Noir mat



Port A 417022
Kaschmir
Cashmere
Kasjmier
Cachemire



Port A 417028
Ultraweiß
Ultra white
Ultrawit
Ultra blanc



Port A 417029
Seidengrau
Silky grey
Zijdegrijs
Gris soyeux



Port A 417030
Rauchblau
Smoke blue
Rookblauw
Bleu fumé



Port A 417031
Platingrau
Platinum grey
Platinumgrijs
Gris platine



Port A 417032
Karbongrau
Carbon grey
Carbongrijs
Gris carbone



Port A 417033
Oliv
Olive
Olijf
Olive



Port A 417034
Angoragrau
Angora grey
Angora grijs
Gris angora



Port A 417036
Altrosa
Antique pink
Oud roze
Vieux rose

Port B PG 5

Mikrolack matt
Microlacquer matt
Microlak mat
Microlaque mate



RAL-/NCS-Lackierung möglich.
Special laquer coating in RAL/NCS colour possible.
Speciale lak in RAL-/NCS-kleur mogelijk.
Laque spéciale coloris RAL/NCS possible.



Port B 418011
Premiumweiß
Premium white
Premiumwit
Blanc primaire



Port B 418017
Schwarz matt
Black matt
Zwart mat
Noir mat



Port B 418022
Kaschmir
Cashmere
Kasjmier
Cachemire



Port B 418028
Ultraweiß
Ultra white
Ultrawit
Ultra blanc



Port B 418029
Seidengrau
Silky grey
Zijdegrijs
Gris soyeux



Port B 418030
Rauchblau
Smoke blue
Rookblauw
Bleu fumé



Port B 418031
Platingrau
Platinum grey
Platinumgrijs
Gris platine



Port B 418032
Karbonrau
Carbon grey
Carbongrijs
Gris carbone



Port B 418033
Oliv
Olive
Olijf
Olive



Port B 418034
Angoragrau
Angora grey
Angora grijs
Gris angora



Port B 418036
Altrosa
Antique pink
Oud roze
Vieux rose

Port C PG 5

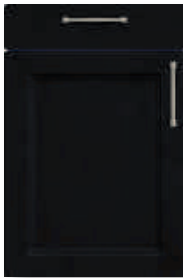
Mikrolack matt
Microlacquer matt
Microlak mat
Microlaque mate



RAL-/NCS-Lackierung möglich.
Special laquer coating in RAL/NCS colour possible.
Speciale lak in RAL-/NCS-kleur mogelijk.
Laque spéciale coloris RAL/NCS possible.



Port C 419011
Premiumweiß
Premium white
Premiumwit
Blanc primaire



Port C 419017
Schwarz matt
Black matt
Zwart mat
Noir mat



Port C 419022
Kaschmir
Cashmere
Kasjmier
Cachemire



Port C 419028
Ultraweiß
Ultra white
Ultrawit
Ultra blanc



Port C 419029
Seidengrau
Silky grey
Zijdegrijs
Gris soyeux



Port C 419030
Rauchblau
Smoke blue
Rookblauw
Bleu fumé



Port C 419031
Platingrau
Platinum grey
Platinumgrijs
Gris platine



Port C 419032
Karbonrau
Carbon grey
Carbongrijs
Gris carbone



Port C 419033
Oliv
Olive
Olijf
Olive



Port C 419034
Angoragrau
Angora grey
Angora grijs
Gris angora



Port C 419036
Altrosa
Antique pink
Oud roze
Vieux rose

Port D PG 5

Mikrolack matt
Microlacquer matt
Microlak mat
Microlaque mate



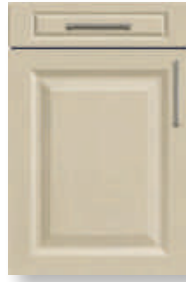
RAL-/NCS-Lackierung möglich.
Special laquer coating in RAL/NCS colour possible.
Speciale lak in RAL-/NCS-kleur mogelijk.
Laque spéciale coloris RAL/NCS possible.



Port D 420011
Premiumweiß
Premium white
Premiumwit
Blanc primaire



Port D 420017
Schwarz matt
Black matt
Zwart mat
Noir mat



Port D 420022
Kaschmir
Cashmere
Kasjmier
Cachemire



Port D 420028
Ultraweiß
Ultra white
Ultrawit
Ultra blanc



Port D 420029
Seidengrau
Silky grey
Zijdegrijs
Gris soyeux



Port D 420030
Rauchblau
Smoke blue
Rookblauw
Bleu fumé



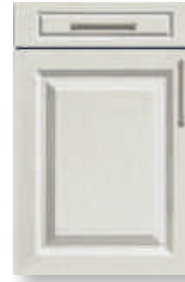
Port D 420031
Platingrau
Platinum grey
Platinumgrijs
Gris platine



Port D 420032
Karbongrau
Carbon grey
Carbongrijs
Gris carbone



Port D 420033
Oliv
Olive
Olijf
Olive



Port D 420034
Angoragrau
Angora grey
Angora grijs
Gris angora



Port D 420036
Altrosa
Antique pink
Oud roze
Vieux rose

Port E PG 5

Mikrolack matt
Microlacquer matt
Microlak mat
Microlaque mate



RAL-/NCS-Lackierung möglich.
Special laquer coating in RAL/NCS colour possible.
Speciale lak in RAL-/NCS-kleur mogelijk.
Laque spéciale coloris RAL/NCS possible.



Port E 421011
Premiumweiß
Premium white
Premiumwit
Blanc primaire



Port E 421017
Schwarz matt
Black matt
Zwart mat
Noir mat



Port E 421022
Kaschmir
Cashmere
Kasjmier
Cachemire



Port E 421028
Ultraweiß
Ultra white
Ultrawit
Ultra blanc



Port E 421029
Seidengrau
Silky grey
Zijdegrijs
Gris soyeux



Port E 421030
Rauchblau
Smoke blue
Rookblauw
Bleu fumé



Port E 421031
Platingrau
Platinum grey
Platinumgrijs
Gris platine



Port E 421032
Karbongrau
Carbon grey
Carbongrijs
Gris carbone



Port E 421033
Oliv
Olive
Olijf
Olive



Port E 421034
Angoragrau
Angora grey
Angora grijs
Gris angora



Port E 421036
Altrosa
Antique pink
Oud roze
Vieux rose

Port F PG 5

Mikrolack matt
Microlacquer matt
Microlak mat
Microlaque mate



Port F 422011
Premiumweiß
Premium white
Premiumwit
Blanc primaire



Port F 422017
Schwarz matt
Black matt
Zwart mat
Noir mat



Port F 422022
Kaschmir
Cashmere
Kasjmier
Cachemire



Port F 422028
Ultraweiß
Ultra white
Ultrawit
Ultra blanc



Port F 422029
Seidengrau
Silky grey
Zijdegrijs
Gris soyeux



Port F 422030
Rauchblau
Smoke blue
Rookblauw
Bleu fumé



Port F 422031
Platingrau
Platinum grey
Platinumgrijs
Gris platine



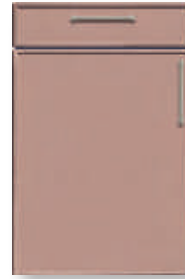
Port F 422032
Karbongrau
Carbon grey
Carbongrijs
Gris carbone



Port F 422033
Oliv
Olive
Olijf
Olive



Port F 422034
Angoragrau
Angora grey
Angora grijs
Gris angora



Port F 422036
Altrosa
Antique pink
Oud roze
Vieux rose

Port G PG 5

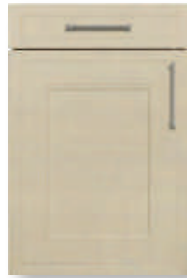
Mikrolack matt
Microlacquer matt
Microlak mat
Microlaque mate



Port G 423011
Premiumweiß
Premium white
Premiumwit
Blanc primaire



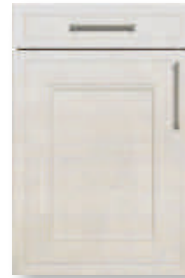
Port G 423017
Schwarz matt
Black matt
Zwart mat
Noir mat



Port G 423022
Kaschmir
Cashmere
Kasjmier
Cachemire



Port G 423028
Ultraweiß
Ultra white
Ultrawit
Ultra blanc



Port G 423029
Seidengrau
Silky grey
Zijdegrijs
Gris soyeux



Port G 423030
Rauchblau
Smoke blue
Rookblauw
Bleu fumé



Port G 423031
Platingrau
Platinum grey
Platinumgrijs
Gris platine



Port G 423032
Karbongrau
Carbon grey
Carbongrijs
Gris carbone



Port G 423033
Oliv
Olive
Olijf
Olive



Port G 423034
Angoragrau
Angora grey
Angora grijs
Gris angora



Port G 423036
Altrosa
Antique pink
Oud roze
Vieux rose

RAL-/NCS-Lackierung möglich.

Special laquer coating in RAL/NCS colour possible.

Speciale lak in RAL-/NCS-kleur mogelijk.

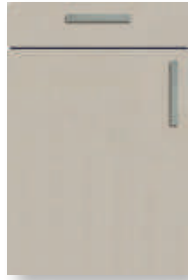
Laque spéciale coloris RAL/NCS possible.

Smat PG 5

Glaslaminat matt
Glass laminate matt
Glaslaminaat mat
Verre stratifié mate



Smat 490010
Premiumweiß matt
Premium white matt
Premiumwit mat
Blanc primaire mat



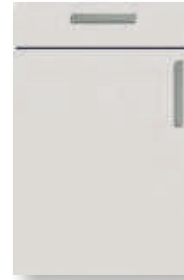
Smat 490030
Sandgrau matt
Sand grey matt
Zandgrijs mat
Gris sable mat



Smat 490040
Anthrazit matt
Anthracite matt
Antraciet mat
Anthracite mat



Smat 490050
Schwarz matt
Black matt
Zwart mat
Noir mat



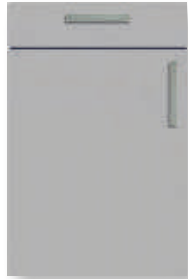
Smat 490060
Seidengrau matt
Silky grey matt
Zijdegrijs mat
Gris soyeux mat



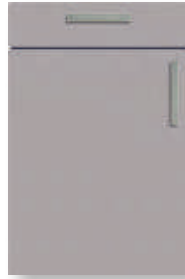
Smat 490070
Titanio matt
Titanio matt
Titanio mat
Titanio mat



Smat 490080
Laguna matt
Laguna matt
Laguna mat
Laguna mat



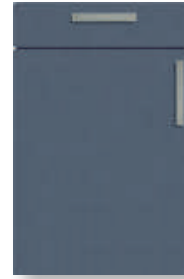
Smat 490090
Aureo matt
Aureo white matt
Aureo mat
Aureo mat



Smat 490100
Luminosa matt
Luminosa matt
Luminosa mat
Luminosa mat



Smat 490110
Galassia matt
Galassia matt
Galassia mat
Galassia mat



Smat 490120
Opale matt
Opale matt
Opale mat
Opale mat

Base PG 6

Eiche-Furnier
Oak veneer
Eiken fineer
Placage de chêne



Base 625200
Natur
Natural
Natuur
Naturel



Base 625201
Snow
Snow
Snow
Snow



Base 625202
Magnolia
Ivory
Magnolia
Magnolia



Base 625203
Seidengrau
Silky grey
Zijdegrijs
Gris soyeux



Base 625204
Karbongrau
Carbon grey
Carbongrijs
Gris carbone



Base 625205
Schwarz
Black
Zwart
Noir



Base 625229
Eiche grau
Oak grey
Eiken grijs
Chêne gris



Base 625207
Grigio
Grigio
Grigio
Grigio

Rino PG 6

PUR-Hochglanzlack
High-gloss polyurethane lacquer
Hoogglanzende PUR-laklaag
Laque brillante PUR



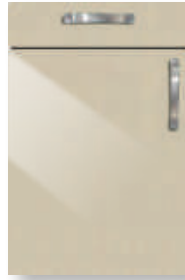
RAL-/NCS-Lackierung möglich.
Special laquer coating in RAL/NCS colour possible.
Speciale lak in RAL-/NCS-kleur mogelijk.
Laque spéciale coloris RAL/NCS possible.



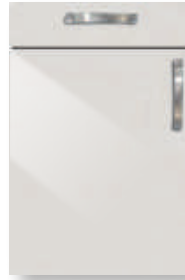
Rino 511200
Premiumweiß Hochglanz
Premium white high gloss
Premiumwit hoogglans
Blanc primaire haute brillance



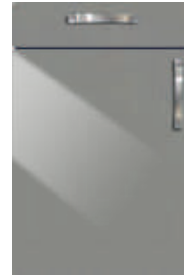
Rino 511209
Schwarz Hochglanz
Black high gloss
Zwart hoogglans
Noir haute brillance



Rino 511210
Kaschmir Hochglanz
Cashmere high gloss
Kasjmier hoogglans
Cachemire haute brillance



Rino 511215
Seidengrau Hochglanz
Silky grey high gloss
Zijdegrijs hoogglans
Gris soyeux haute brillance



Rino 511216
Platingrau Hochglanz
Platinum grey high gloss
Platinumgrijs hoogglans
Gris platine haute brillance



Rino 511218
Karbongrau Hochglanz
Carbon grey high gloss
Carbongrijs hoogglans
Gris carbone haute brillance

Moda PG 7

Risseiche-Furnier
Cracked veneer
Gescheurd finer
Placage chêne fissure



Moda 635200
Natur senkrecht
Natural vertical
Natuur verticaal
Naturel vertical



Moda 635300
Natur waagerecht
Natural horizontal
Natuur horizontaal
Naturel horizontal



Moda 635201
Snow senkrecht
Snow vertical
Snow verticaal
Snow vertical



Moda 635301
Snow waagerecht
Snow horizontal
Snow horizontaal
Snow horizontal



Moda 635202
Magnolia senkrecht
Ivory vertical
Magnolia verticaal
Magnolia vertical



Moda 635302
Magnolia waagerecht
Ivory horizontal
Magnolia horizontaal
Magnolia horizontal



Moda 635203
Seidengrau senkrecht
Silky grey vertical
Zijdegrijs verticaal
Gris soyeux vertical



Moda 635303
Seidengrau waagerecht
Silky grey horizontal
Zijdegrijs horizontaal
Gris soyeux horizontal



Moda 635204
Karbongrau senkrecht
Carbon grey vertical
Carbongrijs verticaal
Gris carbone vertical



Moda 635304
Karbongrau waagerecht
Carbon grey horizontal
Carbongrijs horizontaal
Gris carbone horizontal



Moda 635205
Schwarz senkrecht
Black vertical
Zwart verticaal
Noir vertical



Moda 635305
Schwarz waagerecht
Black horizontal
Zwart horizontaal
Noir horizontal



Moda 635229
Eiche grau senkrecht
Oak grey vertical
Eiken grijs verticaal
Chêne gris vertical



Moda 635329
Eiche grau waagerecht
Oak grey horizontal
Eiken grijs horizontaal
Chêne gris horizontal



Moda 635207
Grigio senkrecht
Grigio vertical
Grigio verticaal
Grigio vertical



Moda 635307
Grigio waagerecht
Grigio horizontal
Grigio horizontaal
Grigio horizontal

Rail PG 7

Mikrolack matt; Stabbreite 6,5mm
 Microlacquer matt; Bar width 6,5mm
 Microlak mat; Balk breedte 6,5mm
 Microlaque mate; Largeur de la poutre 6,5mm



RAL-/NCS-Lackierung möglich.
 Special laquer coating in RAL/NCS colour possible.
 Speciale lak in RAL-/NCS-kleur mogelijk.
 Laque spéciale coloris RAL/NCS possible.



Rail 425011
 Premiumweiß
 Premium white
 Premiumwit
 Blanc primaire



Rail 425017
 Schwarz matt
 Black matt
 Zwart mat
 Noir mat



Rail 425022
 Kaschmir
 Cashmere
 Kasjmier
 Cachemire



Rail 425028
 Ultraweiß
 Ultra white
 Ultrawit
 Ultra blanc



Rail 425029
 Seidengrau
 Silky grey
 Zijdegrijs
 Gris soyeux



Rail 425030
 Rauchblau
 Smoke blue
 Rookblauw
 Bleu fumé



Rail 425031
 Platingrau
 Platinum grey
 Platinumgrijs
 Gris platine



Rail 425032
 Karbongrau
 Carbon grey
 Carbongrijs
 Gris carbone



Rail 425033
 Oliv
 Olive
 Olijf
 Olive



Rail 425034
 Angoragrau
 Angora grey
 Angora grijs
 Gris angora



Rail 425036
 Altrosa
 Antique pink
 Oud roze
 Vieux rose

Caro PG 8

Rahmentür, Eiche-Furnier
 Framed door, Oak veneer
 Frame deur, Eiken fineer
 Porte encadrée, Placage chêne nouveaux



Caro 675200
 Natur
 Natural
 Natuur
 Naturel



Caro 675201
 Snow
 Snow
 Snow
 Snow



Caro 675202
 Magnolia
 Ivory
 Magnolia
 Magnolia



Caro 675203
 Seidengrau
 Silky grey
 Zijdegrijs
 Gris soyeux



Caro 675204
 Karbongrau
 Carbon grey
 Carbongrijs
 Gris carbone



Caro 675205
 Schwarz
 Black
 Zwart
 Noir



Caro 675229
 Eiche grau
 Oak grey
 Eiken grijs
 Chêne gris



Caro 675207
 Grigio
 Grigio
 Grigio
 Grigio

Como PG 8

Rahmen massiv. Füllung furniert.
Solid frame. Veneered panel.
Massief raamwerk. Binnenpaneel gefineerd.
Cadre massif. Panneau plaqué.



Como 685200
Natur
Natural
Natuur
Naturel



Como 685201
Snow
Snow
Snow
Snow



Como 685202
Magnolia
Ivory
Magnolia
Magnolia



Como 685203
Seidengrau
Silky grey
Zijdegrijs
Gris soyeux



Como 685204
Karbongrau
Carbon grey
Carbongrijs
Gris carbone



Como 685205
Schwarz
Black
Zwart
Noir



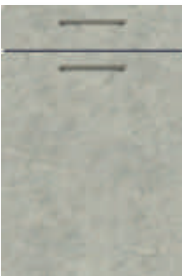
Como 685229
Eiche grau
Oak grey
Eiken grijs
Chêne gris



Como 685207
Grigio
Grigio
Grigio
Grigio

Eton PG 8

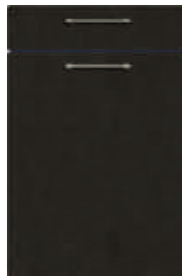
Beton handgespachtelt
Manually filled in concrete
Handmatig geplamuurd in Beton
Enduit à la main, béton



Eton 569000
Steingrau
Stone grey
Steengrijs
Gris pierre



Eton 569001
Seidenweiß
Silky white
Zijdewit
Blanc soyeux



Eton 569004
Dunkelgrau
Dark grey
Donker grijs
Gris foncé

Kado PG 8

Rahmen massiv. Füllung furniert.
Solid frame. Veneered panel.
Massief raamwerk. Binnenpaneel gefineerd.
Cadre massif. Panneau plaqué.



Kado 655200

Natur
Natural
Natuur
Naturel



Kado 655201

Snow
Snow
Snow
Snow



Kado 655202

Magnolia
Ivory
Magnolia
Magnolia



Kado 655203

Seidengrau
Silky grey
Zijdegrijs
Gris soyeux



Kado 655204

Karbondgrau
Carbon grey
Carbondgrijs
Gris carbone



Kado 655205

Schwarz
Black
Zwart
Noir



Kado 655229

Eiche grau
Oak grey
Eiken grijs
Chêne gris



Kado 655207

Grigio
Grigio
Grigio
Grigio

Drop PG 9

Eiche-Furnier
Oak veneer
Eiken fineer
Placage de chêne



Drop 705200

Natur
Natural
Natuur
Naturel



Drop 705201

Snow
Snow
Snow
Snow



Drop 705202

Magnolia
Ivory
Magnolia
Magnolia



Drop 705203

Seidengrau
Silky grey
Zijdegrijs
Gris soyeux



Drop 705204

Karbondgrau
Carbon grey
Carbondgrijs
Gris carbone



Drop 705205

Schwarz
Black
Zwart
Noir



Drop 705229

Eiche grau
Oak grey
Eiken grijs
Chêne gris



Drop 705207

Grigio
Grigio
Grigio
Grigio

Line PG 9

Asteiche- oder Nussbaum-Furnier mit Rille gepresst; Stabbreite 6,5mm
Knotty oak- or Walnut-veneer with groove pressed; Bar width 6,5mm
Eiken met knoesten fineer of Notenhout fineer met groef geperst; Balk breedte 6,5mm
Placage Chêne nouveau ou Noyer avec rainure pressée; Largeur de la poutre 6,5mm



Line 522000

Asteiche
Knotty oak
Eiken met knoesten
Chêne nouveau

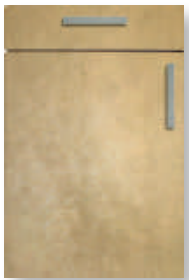


Line 522010

Nussbaum
Walnut
Notenhout
Noyer

Nube PG 9

PUR-Lackierung matt
Matt polyurethane lacquer
Matte PUR-laklaag
Laque PUR mat



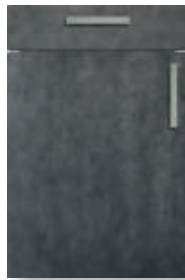
Nube 711010

Burnished brush matt
Burnished brush matt
Burnished brush mat
Burnished brush mat



Nube 711020

Metall hell matt
Metal light matt
Metaal licht mat
Métal clair mat

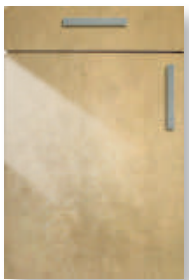


Nube 711030

Metall dunkel matt
Metal dark matt
Metaal donker mat
Métal foncé mat

Sole PG 10

PUR-Lackierung glänzend
Gloss polyurethane lacquer
Glanzende PUR-laklaag
Laque PUR brillante



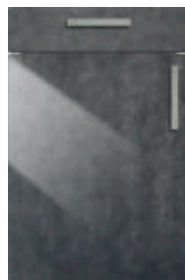
Sole 712010

Burnished brush glänzend
Burnished brush gloss
Burnished brush glans
Burnished brush brillant



Sole 712020

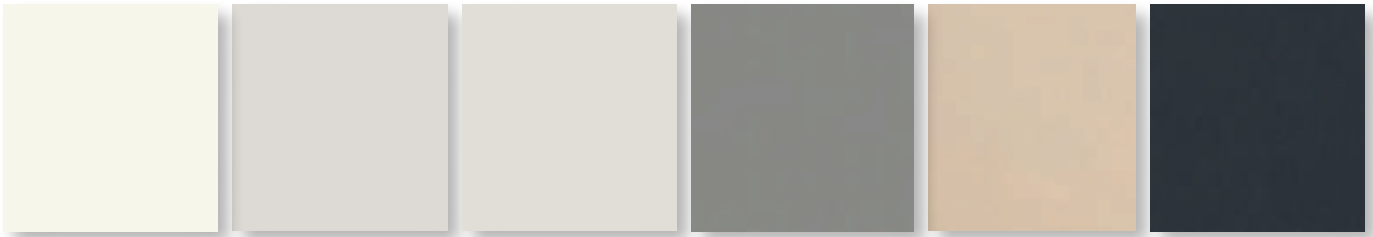
Metall hell glänzend
Metal light gloss
Metaal licht glans
Métal clair brillant



Sole 712030

Metall dunkel glänzend
Metal dark gloss
Metaal donker glans
Métal foncé brillant

Korpusdekore | Carcase décors | Kopusdecors | Décors de corps



142
Premiumweiß
Premium white
Premiumwit
Blanc primaire

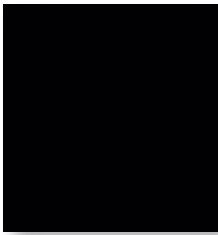
055
Seidengrau
Silky grey
Zijdegrijs
Gris soyeux

057
Angoragrau
Angora grey
Angora grijs
Gris angora

052
Platingrau
Platinum grey
Platinumgrijs
Gris platine

061
Kaschmir
Cashmere
Kasjmier
Cachemire

069
Karbongrau
Carbon grey
Carbongrijs
Gris carbone



059
Schwarz matt
Black matt
Zwart mat
Noir mat

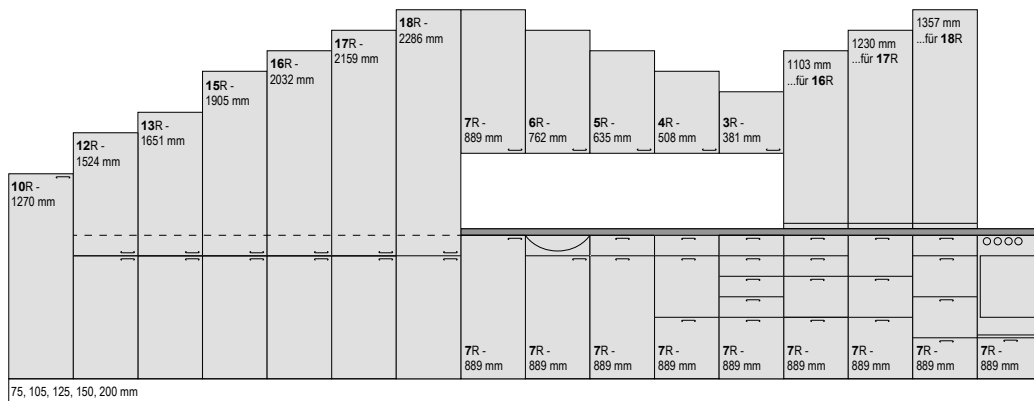
**Korpus innen & außen dekorgleich! | Carcase interior & exterior in the same colour! |
Korpus binnen & buiten zelfde decor! | Intérieur & extérieur corps décor identique!**

Korpuskante frei wählbar | Carcase edge free selectable | Korpuskant vrij te kiezen! | Chant de corps librement sélectionnable.

Premiumweiß Premiumwhite Premium wit Blanc primaire	Kaschmir Cashmere Kasjmier Cachemire	Artisan Eiche Artisan oak Artisan Eiken Chêne artisan
Seidengrau Silky grey Zijdegrijs Gris soyeux	Karbongrau Carbone grey Carbongrijs Gris carbone	Magicgrau Magic grey Magic grijs Gris magic
Angoragrau Angora grey Angora grijs Gris angora	Schwarz matt Black matt Zwart mat Noir mat	Anthrazit Anthracite Antraciet Anthracite
Platingrau Platinum grey Platinumgrijs Gris platine	Magnolia Ivory Magnolia Magnolia	

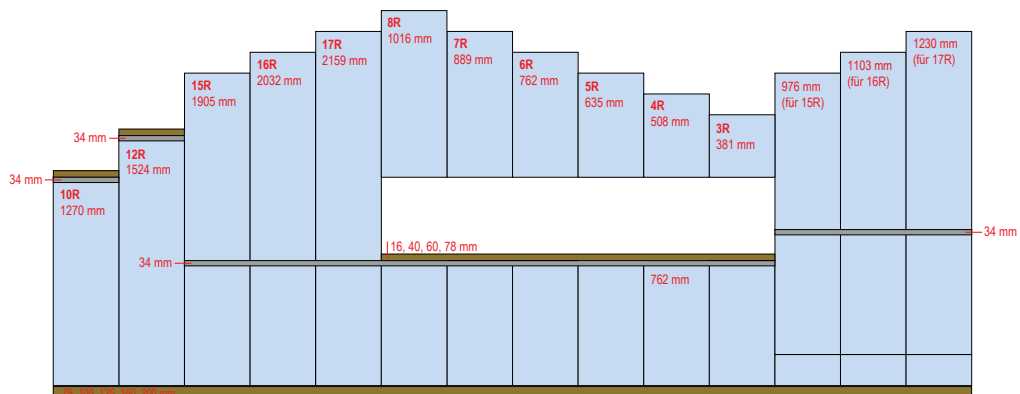
Standard Korpushöhen K1 (7R) / Standard carcass heights K1 (7R) / Standaard korpshoogtes K1 (7R) / Standard hauteurs de corps K1 (7R)

1 Raster = 127 mm
1 grid = 127 mm
1 raster = 127 mm
1 unité = 127 mm



Standard Korpushöhen K2 / Standard carcass heights K2 / Standaard korpshoogtes K2 / Standard hauteurs de corps K2

K2 = Grifflos
K2 = Handleless
K2 = Greeploos
K2 = Sans poignée



Glastüren | Glass doors |
Glazen deuren | Portes vitrées

CIRO



Ciro 920903
Satinato optiwhite
Satinato optiwhite
Satinato optiwhite
Satinato optiwhite



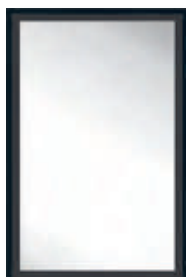
Ciro 920904
Klarglass optiwhite
Clear glass optiwhite
Helder glas optiwhite
Verre propre optiwhite



Ciro 920905
Schwarz transluzent
Black translucent
Zwart doorschijnend
Noir translucide



520
Aluminium matt
Aluminium matt
Aluminium mat
Alu mat



Ciro 920913
Satinato optiwhite
Satinato optiwhite
Satinato optiwhite
Satinato optiwhite



Ciro 920914
Klarglass optiwhite
Clear glass optiwhite
Helder glas optiwhite
Verre propre optiwhite



Ciro 920915
Schwarz transluzent
Black translucent
Zwart doorschijnend
Noir translucide



528
Schwarz
Black
Zwart
Noir

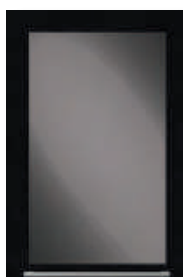
PRADO



K1: 90486 / K2: 91486
Silber
Silver
Zilver
Argent



K1: 90487 / K2: 91487
Weiß
White
Wit
Blanc



K1: 90488 / K2: 91488
Schwarz*
Black*
Zwart*
Noir*

*)
Schwarzglas, im Rahmen-
bereich rückseitig schwarz
lackiert.

Black glass, black lacquered
frame on the rear side.

Zwart glas, achterkant kader
zwart gelakt.

Verre teinté noir, face arrière
relaquée noire dans l'emprise
du cadre arrière.

SQUARE



Square 921915
Schwarz transluzent
Black translucent
Zwart doorschijnend
Noir translucide



Square 921913
Satinato optiwhite
Satinato optiwhite
Satinato optiwhite
Satinato optiwhite



Square 921914
Klarglas optiwhite
Clear glass optiwhite
Helder glas optiwhite
Verre propre optiwhite



528
Schwarz
Black
Zwart
Noir

Programmneutral universell einsetzbar / Program independent universally applicable / Onafhankelijk van het programma universeel
toepasbaar / Indépendant du programme universellement applicable.

Arbeitsplatten | Worktops | Werkbladen | Plans de travail

17 mm / 39 mm / 58 mm / 78 mm
Stärke / Thickness / Diktes / Epaisseurs

Wangen in APL-Dekor | Modular panels in worktop decor |
Stollenwänden in werkbladdecor | Jous en décor plan de travail

17 mm / 40 mm / 59 mm
Stärke / Thickness / Diktes / Epaisseurs



11012
Raja black
Raja black
Raja black
Raja black



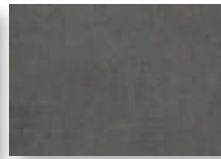
11017
Beton hell
Light concrete
Licht beton
Béton clair



11021
Kristallstein Schwarz
Crystalstone black
Kristalsteen zwart
Cristal noir



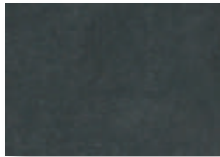
11029
Tema hell
Light tema
Licht tema
Tema clair



11030
Tema dunkel
Dark tema
Donker tema
Tema foncé



11033
Tema Weiß
White tema
Wit tema
Tema blanc



11046
Kito-Stahl
Kito-Steel
Kito-Staal
Kito-Acier



11047
Beton-Optik braun
Concrete-look brown
Betonlook bruin
Aspect béton brun



11048
Raja White Schiefer
Raja White slate
Raja White leisteen
Raja White ardoise



11050
Patina Rock
Patina Rock
Patina Rock
Patina Rock



11051
Spachtelbeton Perlgrau
Spatula concrete pearl grey
Spatel beton parelgrijs
Béton mastic gris perle



11052
Spachtelbeton Graphit
Spatula concrete graphite
Spatel beton grafiet
Béton mastic graphite



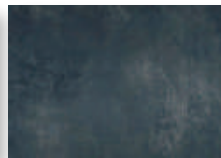
11053
Rusty Iron
Rusty Iron
Rusty Iron
Rusty Iron



11054
Oldstone
Oldstone
Oldstone
Oldstone



11056
Atlantic Stone Graphite
Atlantic Stone Graphite
Atlantic Stone Graphite
Atlantic Stone Graphite



11057
Blue Steel
Blue Steel
Blue Steel
Blue Steel



11058
Chepe
Chepe
Chepe
Chepe



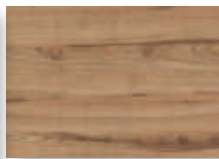
11508
Asteiche Lava
Oak knotty lava
Eiken met knoesten lava
Chêne nouveaux lave



11510
Berglärche
Mountain Larch
Berglariks
Mélèze



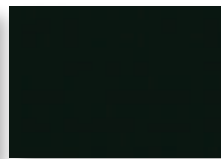
11520
Eiche Grau
Oak grey
Eiken grijs
Chêne gris



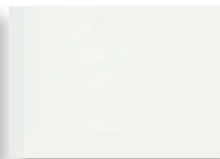
11533
Perolegno
Perolegno
Perolegno
Perolegno



11537
Artisan Eiche
Artisan oak
Artisan eiken
Chêne Artisan



12008
Black supermatt
Black super matt
Black supermat
Black extra mat



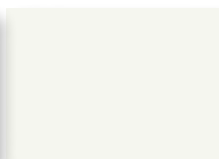
12009
Neutral White supermatt
Neutral White super matt
Neutral White supermat
Neutral White extra mat



12010
Anthracite supermatt
Anthracite super matt
Anthracite supermat
Anthracite extra mat



12011
Elephant supermatt
Elephant super matt
Elephant supermat
Elephant extra mat



13000
Weiß matt
Matt white
Wit mat
Blanc mat



20639
Steineiche Natur
Holm oak natural
Steeneiken natuur
Chêne vert naturel



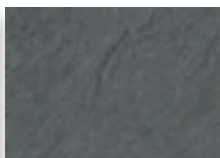
31124
Nussbaum Butcherblock
Walnut Butcherblock
Notenboom Butcherblock
Noyer Butcherblock



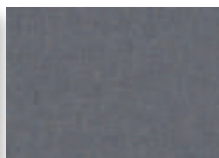
31156
Asteiche antik
Oak knotty antique
Eiken met knoesten oud
Chêne nouveaux vieux



31164
Atacama Kirschbaum
Atacama cherry
Atacama kersenboom
Atacama cerisier



31294
Porto Schiefer
Porto slate
Porto leisteen
Porto ardoise



31338
Zeus anthrazit
Zeus anthracite
Zeus antraciet
Zeus anthracite



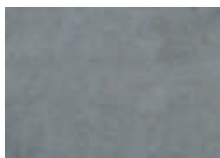
31362
Samsara
Samsara
Samsara
Samsara



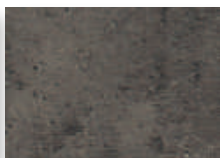
31612
Ipanema weiß
Ipanema white
Ipanema wit
Ipanema blanc



31621
Copperfield
Copperfield
Copperfield
Copperfield



31644
Loftec
Loftec
Loftec
Loftec



31645
Beton dunkel
Dark concrete
Donker beton
Béton foncé



31660
Speckstein Schwarz
Black soapstone
Spekteen zwart
Stéatite noir



31661
Salento Stone
Salento Stone
Salento Stone
Salento Stone



130011
Anthrazit
Anthracite
Antraciet
Anthracite

Griffe | Handles | Grepes | Poignées



501
Schwarz/Edelstahlfarbig
Black/S-steel coloured
Zwart/Rvs-kleur
Noir/Couleur inox



502
Edelstahl
Stainless steel
Roestvrij staal
Inox



503
Edelstahlfarbig
Stainless steel coloured
Rvs-kleur
Couleur inox



506
Edelstahlfarbig
Stainless steel coloured
Rvs-kleur
Couleur inox



508
Edelstahlfarbig
Stainless steel coloured
Rvs-kleur
Couleur inox



513
Schwarz
Black
Zwart
Noir



516
Edelstahlfarbig
Stainless steel coloured
Rvs-kleur
Couleur inox



517
Edelstahlfarbig
Stainless steel coloured
Rvs-kleur
Couleur inox



518
Grau antik
Grey antique
Grijs antiek
Gris antique



519
Grau antik
Grey antique
Grijs antiek
Gris antique



520
Aluminium matt
Aluminium matt
Aluminium mat
Alu mat



525
Kupfer antik
Copper antique
Koper antiek
Cuivre antique



528
Schwarz
Black
Zwart
Noir



530
Schwarz matt
Black matt
Zwart mat
Noir mat



531
Edelstahlfarbig
Stainless steel coloured
Rvs-kleur
Couleur inox



537
Schwarz matt
Black matt
Zwart mat
Noir mat



553
Chrom matt
Chrome matt
Chroom mat
Chrome mat



556
Edelstahlfarbig
Stainless steel coloured
Rvs-kleur
Couleur inox



558
Zinnfarbig antik
Antique pewter coloured
Tinkleurig antiek
Couleur étain antique



566
Edelstahlfarbig
Stainless steel coloured
Rvs-kleur
Couleur inox



569
Edelstahl
Stainless steel
Roestvrij staal
Inox



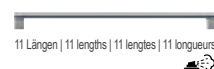
570
Edelstahlfarbig
Stainless steel coloured
Rvs-kleur
Couleur inox



571
Nickelfarbig
Nickel coloured
Nikkelkleur
Couleur nickel



583
Chrom matt
Chrome matt
Chroom mat
Chrome mat



598
Edelstahlfarbig
Stainless steel coloured
Rvs-kleur
Couleur inox



693
Edelstahlfarbig
Stainless steel coloured
Rvs-kleur
Couleur inox



698
Edelstahlfarbig
Stainless steel coloured
Rvs-kleur
Couleur inox



783
Edelstahlfarbig
Stainless steel coloured
Rvs-kleur
Couleur inox



793
Edelstahlfarbig
Stainless steel coloured
Rvs-kleur
Couleur inox



798
Edelstahlfarbig
Stainless steel coloured
Rvs-kleur
Couleur inox



849
Edelstahlfarbig
Stainless steel coloured
Rvs-kleur
Couleur inox



850
Edelstahlfarbig
Stainless steel coloured
Rvs-kleur
Couleur inox



853
Weiß matt
White matt
Wit mat
Blanc mat



916
Edelstahlfarbig
Stainless steel coloured
Rvs-kleur
Couleur inox



923
Edelstahlfarbig
Stainless steel coloured
Rvs-kleur
Couleur inox

Griffe pulverbeschichtet | Handles powder-coated | Grepes met poedercoating | Poignées revêtues par poudre

Die Sprühdose markiert Griffe, die in festgelegten Farben pulverbeschichtet werden können: Karbongrau, Seidengrau, Angoragrau, Schwarz, Premiumweiß, Kaschmir, Anthrazit.

The spray can identifies handles which can be powder-coated in defined colours: carbon grey, silky grey, angora grey, black, premium white, cashmere, anthracite.

De spuitbus geeft de grepen aan die in vastgelegde kleuren gepoedercoat kunnen worden: carbongrijs, zijdegrijs, angora grijs, zwart, premiumwit, kasjmier, antraciet.

La bombe aérosol les poignées qui, peuvent être revêtues par poudre dans certaines couleurs: gris carbone, gris soyeux, gris angora, noir, blanc primaire, cachemire, anthracite.

FREE-Griffsortiment | FREE handle range |
 FREE grepen assortiment | Gamme de poignée FREE



400 160 mm
 Schwarz
 Black
 Zwart
 Noir



401 160 mm
 Edeldstahleffekt
 Stainless steel effect
 Roestvrij staal effect
 Effet inox



402 160 mm
 Anthrazit Glanz
 Anthracite gloss
 Antraciet glans
 Anthracite brillant



403 190 mm
 Griffleiste Schwarz
 Rail handle Black
 Greeplijst Zwart
 Poignée profilée Noir



404 350 mm
 Griffleiste Schwarz
 Rail handle Black
 Greeplijst Zwart
 Poignée profilée Noir



405 160 mm
 Schwarz matt lackiert
 Black matt lacquered
 Zwart mat gelakt
 Noir mat laqué



406 160 mm
 Schwarz matt lackiert
 Black matt lacquered
 Zwart mat gelakt
 Noir mat laqué



407 160 mm
 Schwarz matt sand pulverbeschichtet
 Black matt sand powder-coated
 Zwart mat zand gepoedercoat
 Noir mat sable revêtu par poudre



408 320 mm
 Schwarz matt sand pulverbeschichtet
 Black matt sand powder-coated
 Zwart mat zand gepoedercoat
 Noir mat sable revêtu par poudre



409 192 mm
 Satin Grau lackiert
 Satin grey lacquered
 Satijn grijs gelakt
 Satin gris laqué



410 320 mm
 Satin Grau lackiert
 Satin grey lacquered
 Satijn grijs gelakt
 Satin gris laqué



411 160 mm
 Edeldstahl-finish dunkel
 Stainless-steel-finish dark
 Rvs-afwerking donker
 Finition inox foncé



412 320 mm
 Edeldstahl-finish dunkel
 Stainless-steel-finish dark
 Rvs-afwerking donker
 Finition inox foncé



413 160 mm
 Schwarz matt lackiert
 Black matt lacquered
 Zwart mat gelakt
 Noir mat laqué



414 320 mm
 Schwarz matt lackiert
 Black matt lacquered
 Zwart mat gelakt
 Noir mat laqué



415 160 mm
 Edeldstahl-finish
 Stainless-steel-finish
 Rvs-afwerking
 Finition inox



416 320 mm
 Edeldstahl-finish
 Stainless-steel-finish
 Rvs-afwerking
 Finition inox



417 160 mm
 Griffleiste Schwarz matt
 Rail handle black matt
 Greeplijst zwart mat
 Poignée profilée noir mat



418 288 mm
 Griffleiste Schwarz matt
 Rail handle black matt
 Greeplijst zwart mat
 Poignée profilée noir mat



419 160 mm
 Schwarz matt gebürstet
 Black matt brushed
 Zwart mat geborsteld
 Noir mat brossé



420 16 mm
 Knopf Schwarz
 Knob Black
 Knop Zwart
 Bouton Noir



421 160 mm
 Schwarz
 Black
 Zwart
 Noir



422 32 mm
 Griff halbrund in Weiß
 Handle half-round in white
 Greep half-ronde in wit
 Poignée demi-ronde en blanc



423 32 mm
 Griff halbrund in Schwarz
 Handle half-round in black
 Greep half-ronde in zwart
 Poignée demi-ronde en noir



424 64 mm
 Griff halbrund in Weiß
 Handle half-round in white
 Greep half-ronde in wit
 Poignée demi-ronde en blanc



425 64 mm
 Griff halbrund in Schwarz
 Handle half-round in black
 Greep half-ronde in zwart
 Poignée demi-ronde en noir



426 160 mm
 Bügelgriff rostig
 Bowhandle rusty
 Beugelgreep roestig
 Poignée rouillée



427 32 mm
 Quadratgriff rostig
 Square handle rusty
 Vierkant greep roestig
 Poignée carrée rouillée



428 64 mm
 Quadratgriff rostig
 Square handle rusty
 Vierkant greep roestig
 Poignée carrée rouillée



Wir reden nicht von Nachhaltigkeit. Wir handeln!

Umweltschutz und Sicherheit sind für uns nicht nur Worte, sondern fester Bestandteil unseres täglichen Handelns. GS-Zertifikat für Sicherheit, Recycling-Vereinbarung für Umweltschutz und PEFC-Zertifikat für Nachhaltigkeit dokumentieren dies.





We don't talk about sustainability. We act on it!

Protection of the environment and safety are not just words to us, but a firm part of everything we do, every day. Which is documented in the GS certificate for safety, the recycling agreement for the protection of the environment, and PEFC certification for Sustainability.

Wij praten niet over duurzaamheid. Wij handelen!

Milieubescherming en veiligheid zijn voor ons niet slechts holle frasen, maar een vast bestanddeel van ons dagelijkse handelen. Daarvan getuigen: GS-certificaat voor veiligheid, recycling-verdrag voor milieubescherming en PEFC-certificaat voor duurzaamheid.

Nous ne parlons pas de durabilité. Nous agissons !

La protection de l'environnement et la sécurité ne sont pas seulement de vains mots, nous les appliquons tous les jours dans notre travail. Marque GS pour la sécurité, recyclage pour la protection de l'environnement et certification PEFC pour la durabilité le prouvent.



kuhlmann 
Meine Küche. Made in Germany.

RWK & Kuhlmann Küchen GmbH,
Unterer Hellweg 2/4, D-32584 Löhne
Fon +49 (0) 5732 9816-0, Fax +49 (0) 5732 9816-100
info@kuhlmannkueche.de, www.kuhlmannkueche.de